

LEA Name : Reading SD
Address : 800 Washington St
Reading, PA 19601

County : Berks
AUN Number : 114067002
LEA Type : SD

REVISED SUBMISSION

Annual Financial Report Accuracy Certification Statement

For Fiscal Year Ending
6/30/2017

Pennsylvania Department of Education
&
Office of Comptroller Operations

PDE-2056: Intermediate Unit

PDE-2057: School District, AVTS/CTC, Charter School,
and Special Program Jointure

CERTIFICATION: By signing this page I agree that the electronic data submitted is a complete and accurate statement of the financial operations and status of the local education agency for the fiscal year. It has been prepared in accordance with generally accepted accounting principles and established Commonwealth of PA reporting guidelines.


Chief School Administrator Signature

11-20-18
Date


Board Secretary Signature

11-20-18
Date

Christian A Lellig

Contact Person

lelligc@readingsd.org

Contact Person E-mail Address

(484)258-7054

Contact Person Telephone Number

(610)371-5833

Contact Person Fax Number

Ext : 01303

Audit Certification
Annual Financial Report:
For Fiscal Year Ending 6/30/2017
(Pursuant to PA School Code Section 218(b))

LEA Name : Reading SD
AUN Number : 114067002
County : Berks

Audit Certification Due: 12/31/2017

This certification is applicable to the Annual Financial Report data submitted through the Consolidated Financial Reporting System on: _____
Date

Auditing Firm: MAILLIE
PO Box 680
OAKS PA 19456-0680

Auditor Contact Name: CHRISTOPHER N. HERR CPA
Auditor Phone: 610-935-1420
Auditor E-mail: CHERR@maillie.com

CERTIFICATION: By signing this page I agree that the financial statements of the school have been properly audited as noted above pursuant to Article XXIV, and in the auditor's professional opinion, the Annual Financial Report (PDE-2057) submitted on the date referenced is materially consistent with the audited financial statements.

Chief School Administrator

[Signature]
Signature

9-26-18
Date

Board Secretary

[Signature]
Signature

9-26-18
Date

Christian A Lellig

Contact Person

lelligc@readingsd.org

Contact Person E-mail Address

(484)258-7054

Ext : 01303

Contact Person Telephone Number

(610)371-5833

Contact Person Fax Number

Audit Certification
Annual Financial Report:
For Fiscal Year Ending 6/30/2017
(Pursuant to PA School Code Section 218(b))

LEA Name : Reading SD
AUN Number : 114067002
County : Berks

Audit Certification Due: 12/31/2017

This certification is applicable to the Annual Financial Report data submitted through the Consolidated Financial Reporting System on: _____
Date

Auditing Firm: **MAILLIE**
PO Box 680
OAKS PA 19456-0680

Auditor Contact Name: **CHRISTOPHER N. HERR CPA**
Auditor Phone: **610-935-1420**
Auditor E-mail: **CHERR@maillie.com**

CERTIFICATION: By signing this page I agree that the financial statements of the school have been properly audited as noted above pursuant to Article XXIV, and in the auditor's professional opinion, the Annual Financial Report (PDE-2057) submitted on the date referenced is materially consistent with the audited financial statements.

Chief School Administrator


Signature

9-26-18
Date

Board Secretary


Signature

9-26-18
Date

Christian A Lellig

Contact Person

lelligc@readingsd.org

Contact Person E-mail Address

(484)258-7054

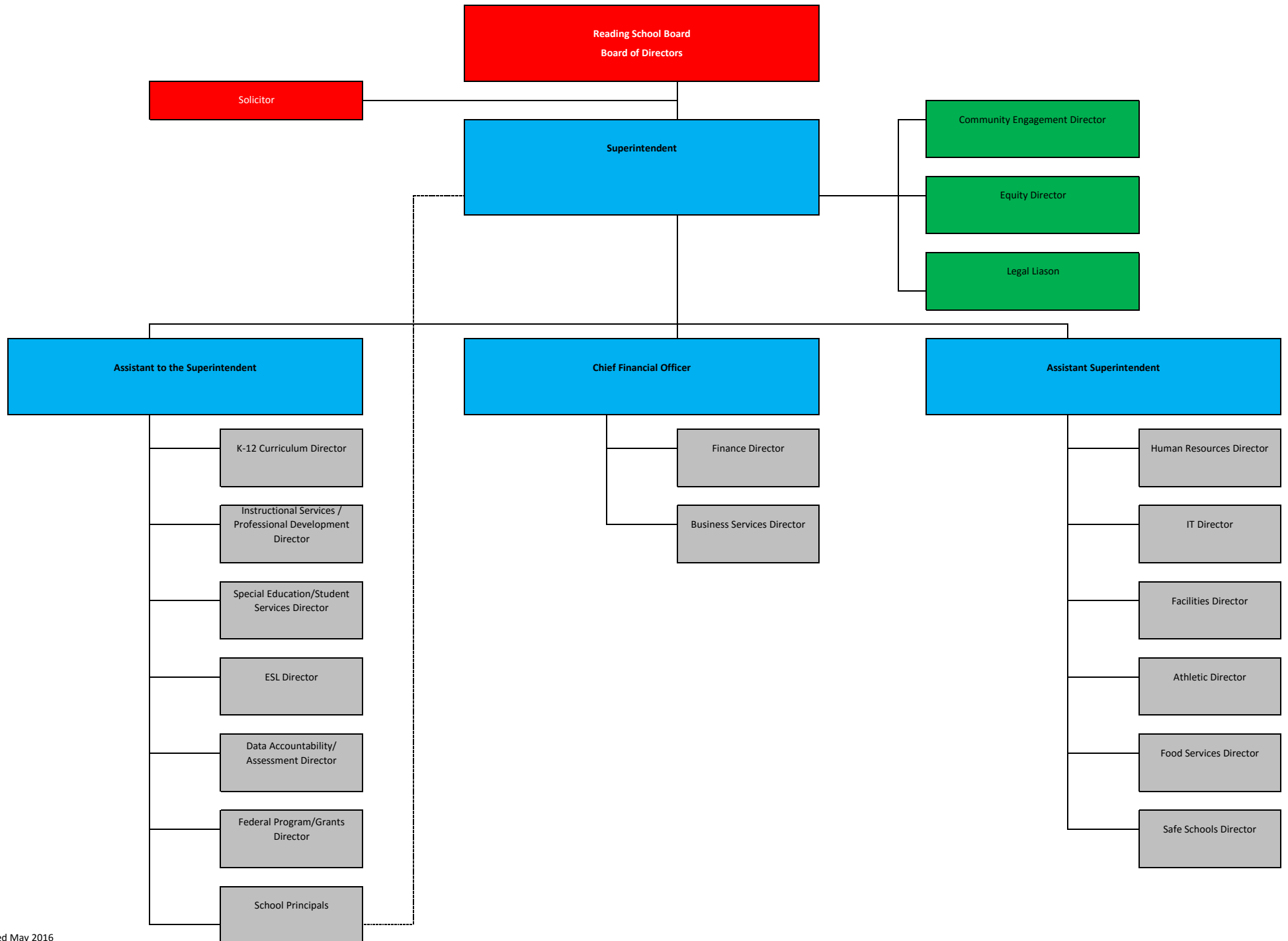
Ext : **01303**

Contact Person Telephone Number

(610)371-5833

Contact Person Fax Number

READING SCHOOL DISTRICT
LEADERSHIP TEAM ORGANIZATIONAL CHART



Val Number	Description	Justification
11075	Data has been reported on the NAG within Fund #28 – Other Comptroller Approved Special Revenue Fund. Please identify the title and function of this fund.	Fund #28 is the Reading School District’s Special Revenue – Student Activity Fund for all Elementary Schools.
11085	Data has been reported on the REG within Fund #28 – Other Comptroller Approved Special Revenue Fund. Please identify the title and function of this fund.	Fund #28 is the Reading School District’s Special Revenue – Student Activity Fund for all Elementary Schools.
42420	Expenditure Detail: Total current year 2700-513 expenditure varies from prior year by 10%. Correct the data or enter a justification. 2700-513, AFR Exp Detail: \$2,959.90 2700-513, PY AFR Amount: \$24,336.90	The Reading School District contracted with the Berks County IU for additional transportation rather than using contracted carriers.
50160	SOIN: All Governmental Fund General Obligation Bonds must include an amount for Interest Paid during Fiscal Year. Correct data or enter a justification.	Capital Appreciation Bonds are issued as "discount bonds" from their principal face amount, they do not pay periodic interest and they mature at their principal face value.
50180	SOIN: All Governmental Fund General Obligation Bonds must include an amount for Amount Due Within One Year (Principal and Interest). Correct data or enter a justification.	Capital Appreciation Bonds are issued as "discount bonds" from their principal face amount, they do not pay periodic interest and they mature at their principal face value.
50410	SESS - 2140 Psychological Services: SESS Schedule amounts for Special Education vary from prior year by 40% or more. Correct the data or enter a justification. SESS Schedule 2140: \$101,778.86 Prior Year SESS Schedule 2140: \$193,917.95	Revised and reviewed accounts from the Reading School District's original submission for Psychological Services. Total Special Education Psychological Services for current year of were reduced by \$264,857 as compared to prior year.
50450	SESS - 2350 Legal and Accounting Services: SESS Schedule amounts for Special Education vary from prior year by 40% or more. Correct the data or enter a justification. SESS Schedule 2350: \$256,425.06 Prior Year SESS Schedule 2350: \$173,947.79	Revised and reviewed accounts from the Reading School District's original submission for Legal and Accounting Services. The increase is due to additional legal representation required by the Reading School District.
50460	SESS - 2420 Medical Services: SESS Schedule amounts for Special Education vary from prior year by 40% or more. Correct the data or enter a justification. SESS Schedule 2420: \$0.00 Prior Year SESS Schedule 2420: \$263,872.64	Revised and reviewed accounts from the Reading School District's original submission for Medical Services. For the SY16-17, all medical services were posted to Nonspecial Education (current year).

REVISED SUBMISSION

50470	<p>SESS - 2440 Nursing Services: SESS Schedule amounts for Special Education vary from prior year by 40% or more. Correct the data or enter a justification.</p> <p>SESS Schedule 2440: \$165,168.43 Prior Year SESS Schedule 2440: \$1,376,435.95</p>	<p>Revised and reviewed accounts from the Reading School District's original submission for Nursing Services. For the SY16-17, approximately 7% or \$165,168.43 of nursing services were posted to Special Education (current year).</p>
50480	<p>SESS - 2700 Student Transportation Services: SESS Schedule amounts for Special Education vary from prior year by 40% or more. Correct the data or enter a justification.</p> <p>SESS Schedule 2700: \$3,091,084.63 Prior Year SESS Schedule 2700: \$2,086,659.42</p>	<p>Revised and reviewed accounts from the Reading School District's original submission for Student Transportation. The change is due to a detailed review of the costs associated with special education transportation and the adjusted reporting accordingly.</p>

Amounts Expressed in Whole Dollars		<u>General Fund</u> <u>(10)</u>	<u>Public Purpose Trust</u> <u>(27)</u>	<u>Other Compt Approved</u> <u>(28)</u>	<u>Athletic / Activity</u> <u>(29)</u>	<u>Capital Reserve (690.</u> <u>1850)</u> <u>(31)</u>
Assets And Deferred Outflows Of Resources						
Assets						
0100	Cash and Cash Equivalents	76,453,108		145,224		
0110	Investments					
0120	Taxes Receivable	8,229,053				
0130	Due From Other Funds	2,797,742				
0141	Due From Other Governments	2,944,028				
0142	State Revenue Receivable	10,577,005				
0143	Federal Revenue Receivable	2,602,780				
0145	Other Intergovernmental Revenue Receivable					
0146	Due from Primary Government					
0147	Due from Component Unit					
0150	Other Receivables	562,106				
0170	Inventories					
0180	Prepaid Expenses (Expenditures)	51,126				
0190	Other Current Assets					
Total Assets		\$104,216,948		\$145,224		
0910	Deferred Outflows of Resources					
Total Assets And Deferred Outflows Of Resources		\$104,216,948		\$145,224		

LEA : 114067002 Reading SD

Printed 1/24/2019 10:59:20 AM

REVISED SUBMISSION

Amounts Expressed in Whole Dollars

	<u>Capital Reserve (1431)</u> <u>(32)</u>	<u>Other Capital Projects</u> <u>Fund</u> <u>(39)</u>	<u>Debt Service</u> <u>(40)</u>	<u>Permanent</u> <u>(90)</u>	<u>Total Governmental</u> <u>Funds</u>
Assets And Deferred Outflows Of Resources					
Assets					
0100 Cash and Cash Equivalents		6,175,200			82,773,532
0110 Investments					
0120 Taxes Receivable					8,229,053
0130 Due From Other Funds					2,797,742
0141 Due From Other Governments					2,944,028
0142 State Revenue Receivable					10,577,005
0143 Federal Revenue Receivable					2,602,780
0145 Other Intergovernmental Revenue Receivable					
0146 Due from Primary Government					
0147 Due from Component Unit					
0150 Other Receivables					562,106
0170 Inventories					
0180 Prepaid Expenses (Expenditures)					51,126
0190 Other Current Assets					
Total Assets		\$6,175,200			\$110,537,372
0910 Deferred Outflows of Resources					
Total Assets And Deferred Outflows Of Resources		\$6,175,200			\$110,537,372

Amounts Expressed in Whole Dollars		<u>General Fund</u> <u>(10)</u>	<u>Public Purpose Trust</u> <u>(27)</u>	<u>Other Compt Approved</u> <u>(28)</u>	<u>Athletic / Activity</u> <u>(29)</u>	<u>Capital Reserve (690.</u> <u>1850)</u> <u>(31)</u>
Liabilities And Deferred Inflows Of Resources And Fund Balances						
Liabilities						
0400	Due to Other Funds			1,800		
0411	Due to Other Governments					
0412	Due to Primary Government					
0413	Due to Component Unit					
0420	Accounts Payable	7,575,407		23,089		
0430	Contracts Payable					
0440	Current Portion of Long-Term Debt					
0450	Short-Term Payables					
0461	Accrued Salaries and Benefits	25,576,767				
0462	Payroll Deductions and Withholding	2,030,483				
0480	Unearned Revenues	923,596				
0490	Other Current Liabilities					
Total Liabilities		\$36,106,253		\$24,889		
0950	Deferred Inflows of Resources	6,808,641				
Fund Balances						
0810	Nonspendable Fund Balance	51,126				
0820	Restricted Fund Balance			120,335		
0830	Committed Fund Balance					
0840	Assigned Fund Balance	42,000,000				
0850	Unassigned Fund Balance	19,250,928				
Total Fund Balances		\$61,302,054		\$120,335		
Total Liabilities, Deferred Inflows Of Resources And Fund Balances		\$104,216,948		\$145,224		

LEA : 114067002 Reading SD

Printed 1/24/2019 10:59:20 AM

REVISED SUBMISSION

Amounts Expressed in Whole Dollars	Capital Reserve (1431) (32)	Other Capital Projects Fund (39)	Debt Service (40)	Permanent (90)	Total Governmental Funds
Liabilities And Deferred Inflows Of Resources And Fund Balances					
Liabilities					
0400 Due to Other Funds					1,800
0411 Due to Other Governments					
0412 Due to Primary Government					
0413 Due to Component Unit					
0420 Accounts Payable		369,945			7,968,441
0430 Contracts Payable					
0440 Current Portion of Long-Term Debt					
0450 Short-Term Payables					
0461 Accrued Salaries and Benefits					25,576,767
0462 Payroll Deductions and Withholding					2,030,483
0480 Unearned Revenues					923,596
0490 Other Current Liabilities					
Total Liabilities		\$369,945			\$36,501,087
0950 Deferred Inflows of Resources					6,808,641
Fund Balances					
0810 Nonspendable Fund Balance					51,126
0820 Restricted Fund Balance		5,805,255			5,925,590
0830 Committed Fund Balance					
0840 Assigned Fund Balance					42,000,000
0850 Unassigned Fund Balance					19,250,928
Total Fund Balances		\$5,805,255			\$67,227,644
Total Liabilities, Deferred Inflows Of Resources And Fund Balances		\$6,175,200			\$110,537,372

Amounts Expressed in Whole Dollars		<u>General Fund</u> <u>(10)</u>	<u>Public Purpose Trust</u> <u>(27)</u>	<u>Other Compt Approved</u> <u>(28)</u>	<u>Athletic / Activity</u> <u>(29)</u>	<u>Capital Reserve (690.</u> <u>1850)</u> <u>(31)</u>
Revenues						
6000	Revenue from Local Sources	44,794,291		163,925		
7000	Revenue from State Sources	185,589,128				
8000	Revenue from Federal Sources	18,382,352				
Total Revenues		\$248,765,771		\$163,925		
Expenditures						
1000	Instruction	147,385,236				
2000	Support Services	66,947,841				
3000	Operation of Non-Instructional Services	2,932,333		156,998		
4000	Facilities Acquisition, Construction and Improvement Services					
5110	Debt Service	16,914,614				
5130	Refund of Prior Year Revenues / Receipts	6,598				
Total Expenditures		\$234,186,622		\$156,998		
Excess (Deficiency) Of Revenues Over Expenditures		\$14,579,149		\$6,927		
Other Financing Sources (Uses)						
9110	Face Value of Bonds Issued					
9120	Proceeds from Refunding of Bonds					
9130	Bond Premiums					
9200	Proceeds from Extended-Term Financing					
9300	Interfund Transfers - IN					
9400	Sale of or Compensation for Loss of Fixed Assets					
9710	Transfers from Component Units					
9720	Transfers from Primary Governments					
9910	Other Financing Sources Not Listed in the 9000 Series					
9990	Insurance Recoveries	38,695				
5120	Debt Service – Refunded Bonds					
5150	Bond Discounts					
5200	Interfund Transfers – Out					
5300	Transfers Out to Component Units/Primary Governments					
Total Other Financing Sources (Uses)		\$38,695				

Amounts Expressed in Whole Dollars		<u>Capital Reserve (1431)</u> <u>(32)</u>	<u>Other Capital Projects</u> <u>Fund</u> <u>(39)</u>	<u>Debt Service</u> <u>(40)</u>	<u>Permanent</u> <u>(90)</u>	<u>Total Governmental</u> <u>Funds</u>
Revenues						
6000	Revenue from Local Sources		52,214			45,010,430
7000	Revenue from State Sources					185,589,128
8000	Revenue from Federal Sources					18,382,352
Total Revenues			\$52,214			\$248,981,910
Expenditures						
1000	Instruction					147,385,236
2000	Support Services					66,947,841
3000	Operation of Non-Instructional Services					3,089,331
4000	Facilities Acquisition, Construction and Improvement Services		2,315,736			2,315,736
5110	Debt Service					16,914,614
5130	Refund of Prior Year Revenues / Receipts					6,598
Total Expenditures			\$2,315,736			\$236,659,356
Excess (Deficiency) Of Revenues Over Expenditures			(\$2,263,522)			\$12,322,554
Other Financing Sources (Uses)						
9110	Face Value of Bonds Issued					
9120	Proceeds from Refunding of Bonds					
9130	Bond Premiums					
9200	Proceeds from Extended-Term Financing					
9300	Interfund Transfers - IN					
9400	Sale of or Compensation for Loss of Fixed Assets					
9710	Transfers from Component Units					
9720	Transfers from Primary Governments					
9910	Other Financing Sources Not Listed in the 9000 Series					
9990	Insurance Recoveries					38,695
5120	Debt Service – Refunded Bonds					
5150	Bond Discounts					
5200	Interfund Transfers – Out					
5300	Transfers Out to Component Units/Primary Governments					
Total Other Financing Sources (Uses)						\$38,695

Amounts Expressed in Whole Dollars		<u>General Fund</u> <u>(10)</u>	<u>Public Purpose Trust</u> <u>(27)</u>	<u>Other Compt Approved</u> <u>(28)</u>	<u>Athletic / Activity</u> <u>(29)</u>	<u>Capital Reserve</u> <u>(690.</u> <u>1850)</u> <u>(31)</u>
Special And Extraordinary Items						
9920 Special Items – Gains						
9930 Extraordinary Items – Gains						
5520 Special Items – Losses						
5530 Extraordinary Items – Losses						
Net Change In Fund Balances		\$14,617,844		\$6,927		
Fund Balance						
0001 Fund Balance - Beginning of Fiscal Year		46,684,210		113,408		
Fund Balance - End Of Year		\$61,302,054		\$120,335		

Amounts Expressed in Whole Dollars		<u>Capital Reserve (1431)</u> <u>(32)</u>	<u>Other Capital Projects</u> <u>Fund</u> <u>(39)</u>	<u>Debt Service</u> <u>(40)</u>	<u>Permanent</u> <u>(90)</u>	<u>Total Governmental</u> <u>Funds</u>
Special And Extraordinary Items						
9920	Special Items – Gains					
9930	Extraordinary Items – Gains					
5520	Special Items – Losses					
5530	Extraordinary Items – Losses					
Net Change In Fund Balances			(\$2,263,522)			\$12,361,249
Fund Balance						
0001	Fund Balance - Beginning of Fiscal Year		8,068,777			54,866,395
Fund Balance - End Of Year			\$5,805,255			\$67,227,644

LEA : 114067002 Reading SD

Printed 1/24/2019 10:59:28 AM

REVISED SUBMISSION

Amounts Expressed in Whole Dollars	<u>Food Service</u> <u>(51)</u>	<u>Child Care</u> <u>Operations</u> <u>(52)</u>	<u>Other Enterprise</u> <u>(58)</u>	<u>TOTAL</u>	<u>Internal Service</u> <u>(60)</u>
Assets And Deferred Outflows Of Resources					
Current Assets					
0100 Cash and Cash Equivalents	4,524,616			4,524,616	
0110 Investments					
0130 Due From Other Funds					
0141 Due From Other Governments					
0142 State Revenue Receivable	61,430			61,430	
0143 Federal Revenue Receivable	1,401,783			1,401,783	
0146 Due from Primary Government					
0147 Due from Component Unit					
0150 Other Receivables	25,694			25,694	
0170 Inventories	198,948			198,948	
0180 Prepaid Expenses (Expenditures)					
0190 Other Current Assets					
Total Current Assets	\$6,212,471			\$6,212,471	
Noncurrent Assets					
0211 Land					
0212 Site Improvements (Net)					
0220 Buildings and Building Improvements (Net)					
0230 Machinery, Equipment and Furniture (Net)	993,138			993,138	
0250 Construction in Progress					
0260 Long Term Prepayments					
0290 Other Noncurrent Assets					
Total Noncurrent Assets	\$993,138			\$993,138	
0910 Deferred Outflows of Resources	1,796,000			1,796,000	
Total Assets And Deferred Outflows Of Resources	\$9,001,609			\$9,001,609	

LEA : 114067002 Reading SD

Printed 1/24/2019 10:59:28 AM

REVISED SUBMISSION

Amounts Expressed in Whole Dollars	Food Service (51)	Child Care Operations (52)	Other Enterprise (58)	TOTAL	Internal Service (60)
Liabilities And Deferred Inflows Of Resources And Net Position					
Current Liabilities					
0400 Due to Other Funds	2,797,742			2,797,742	
0411 Due to Other Governments					
0413 Due to Component Unit					
0420 Accounts Payable	33,500			33,500	
0430 Contracts Payable					
0440 Current Portion of Long-Term Debt					
0450 Short-Term Payables					
0461 Accrued Salaries and Benefits					
0462 Payroll Deductions and Withholding					
0480 Unearned Revenues					
0490 Other Current Liabilities					
Total Current Liabilities	\$2,831,242			\$2,831,242	
Noncurrent Liabilities					
0510 Bonds Payable					
0520 Extended-Term Financing Agreements Payable					
0530 Lease-Purchase Obligations					
0540 Accumulated Compensated Absences	63,784			63,784	
0550 Authority Lease Obligations					
0560 Other Post-Employment Benefits (OPEB)	4,236,820			4,236,820	
0570 Net Pension Liability					
0599 Other Noncurrent Liabilities	10,369,000			10,369,000	
Total Noncurrent Liabilities	\$14,669,604			\$14,669,604	
Total Liabilities	\$17,500,846			\$17,500,846	
0950 Deferred Inflows of Resources	582,000			582,000	
Net Position					
0791 Net Investment in Capital Assets	993,138			993,138	
0008 Restricted Net Position (0792 – 0798)					
0799 Unrestricted Net Position	(10,074,375)			(10,074,375)	
Total Net Position	(\$9,081,237)			(\$9,081,237)	
Total Liabilities And Deferred Inflows Of Resources And Net Position	\$9,001,609			\$9,001,609	

Amounts Expressed in Whole Dollars	Food Service (51)	Child Care Operations (52)	Other Enterprise (58)	TOTAL	Internal Service (60)
Operating Revenues					
6600 Food Service Revenue	101,518			101,518	
0071 Charges for Services	265,661			265,661	
0072 Other Operating Revenue					
Total Operating Revenues	\$367,179			\$367,179	
Operating Expenses					
100 Personnel Services – Salaries	3,932,758			3,932,758	
200 Personnel Services – Employee Benefits	3,022,144			3,022,144	
300 Purchased Professional and Technical Services					
400 Purchased Property Services	449,836			449,836	
500 Other Purchased Services	224,341			224,341	
600 Supplies	6,921,913			6,921,913	
740 Depreciation	135,631			135,631	
810 Dues and Fees	629			629	
890 Miscellaneous Expenditures	449			449	
Total Operating Expenses	\$14,687,701			\$14,687,701	
Operating Income (Loss)	(\$14,320,522)			(\$14,320,522)	
Non Operating Revenues (Expenses)					
6500 Earnings on Investments	2,392			2,392	
6920 Contributions and Donations from Private Sources					
6930 Gains or Losses on Sale of Fixed Assets					
6991 Refunds of a Prior Year Expenditure					
7000 Revenue from State Sources	1,275,122			1,275,122	
8000 Revenue from Federal Sources	11,852,257			11,852,257	
820 Claims and Judgments Against the LEA					
830 Interest					
TOTAL Non Operating Revenues (Expenses)	\$13,129,771			\$13,129,771	
Income (Loss) Before Contributions And Transfers	(\$1,190,751)			(\$1,190,751)	

REVISED SUBMISSION

Amounts Expressed in Whole Dollars	<u>Food Service</u> <u>(51)</u>	<u>Child Care Operations</u> <u>(52)</u>	<u>Other Enterprise</u> <u>(58)</u>	<u>TOTAL</u>	<u>Internal Service</u> <u>(60)</u>
Contributions, Transfers, and Special and Extraordinary Items					
5200 Interfund Transfers – Out					
5300 Transfers Out to Component Units/Primary Governments					
5520 Special Items – Losses					
5530 Extraordinary Items – Losses					
9300 Interfund Transfers - IN					
9500 Capital Contributions					
9700 Transfers IN From Component Units/Primary Governments					
9920 Special Items – Gains					
9930 Extraordinary Items – Gains					
Change In Net Position	(\$1,190,751)			(\$1,190,751)	
0002 Net Position - Beginning of Fiscal Year	(7,890,486)			(7,890,486)	
0003 Accounting Changes / Residual Equity Transfers					
Net Position - End Of Year	(\$9,081,237)			(\$9,081,237)	

LEA : 114067002 Reading SD

Printed 1/24/2019 10:59:36 AM

REVISED SUBMISSION

Amounts Expressed in Whole Dollars	<u>Food Service</u> <u>(51)</u>	<u>Child Care Operations</u> <u>(52)</u>	<u>Other Enterprise</u> <u>(58)</u>	<u>TOTAL</u>	<u>Internal Service(60)</u>
Cash Flows From Operating Activities					
0011 Cash Receipts From Users	570,352			570,352	
0012 Cash Receipts From Assessments Made to Other Funds					
0013 Cash Receipts From Earnings on Investments					
0014 Cash Receipts From Other Operating Revenue					
0015 Cash Payments To Employees For Services	6,614,230			6,614,230	
0016 Cash Payments For Insurance Claims					
0017 Cash Payments To Suppliers For Goods and Services	7,226,972			7,226,972	
0018 Cash Payments For Other Operating Expenses					
Net Cash Provided By (Used For) Operating Activities	(\$13,270,850)			(\$13,270,850)	
Cash Flows From Non-Capital Financing Activities					
0021 Receipts From Local Sources - 6000					
0022 Receipts From State Sources - 7000	1,348,368			1,348,368	
0023 Receipts From Federal Sources -8000	13,432,516			13,432,516	
0024 Notes and Loans Received (Repaid)					
0025 Interest Paid on Notes/Loans - 5100-830					
0026 Operating Transfers In (Out)/Residual Equity Trans					
0027 Operating Transfers In (Out) Primary Government / Comp Unit					
0028 Receipts From Refund of Prior Year Expenditures - 6991					
0029 Special and Extraordinary Gains (losses)					
Net Cash Prov By (Used for) Non-Capital Financing Activities	\$14,780,884			\$14,780,884	
Cash Flows From Capital and Related Financing Activities					
0031 Payments For Fac Acq, Const, and Imp - 4000	(384,104)			(384,104)	
0032 Gain / (Loss) on Sale of Fixed Assets - 6930					
0033 Proceeds From Extended Term Financing - 9200					
0034 Principal Paid on Financing Agreements					
0035 Interest Paid on Financing Agreements - 5100-830					
0036 (Inc) Dec in Contributed Capital					
Net Cash Prov By (Used for) Capital and Related Financing Activities	(\$384,104)			(\$384,104)	
Cash Flows From Investing Activities					
0041 Earnings on Investments - 6500	2,392			2,392	
0042 Purchase of Inv Securities / Deposits to Inv Pools					
0043 Receipts From Investment Pool Withdrawals					
0044 Proceeds from Sale and Maturity of Inv Securities					
0045 Loans Received (Paid)					
Net Cash Prov By (Used for) Investing Activities	\$2,392			\$2,392	

LEA : 114067002 Reading SD

Printed 1/24/2019 10:59:36 AM

REVIS
ED SUBMISSION

	Food Service (51)	Child Care Operations (52)	Other Enterprise (58)	TOTAL	Internal Service (60)
Net Increase (Decrease) in Cash Flows	1,128,322			1,128,322	
0004 Cash and Cash Equivalents Beginning of Year	3,396,294			3,396,294	
Cash and Cash Equivalents at Year End	\$4,524,616			\$4,524,616	
Reconciliation of Operating Income (Loss) To Net Cash Provided by (Used For) Operating Activities					
0005 Operating Income (Loss) per REP	(14,320,522)			(14,320,522)	
Adjustments					
0051 Depreciation and Net Amortization	135,631			135,631	
0052 Provision for Uncollectible Accounts					
0053 Other Adjustments					
Effect of Changes in Assets, Liabilities, Deferred Outflows and Deferred Inflows					
0054 (Inc) Dec In Accounts Receivable (0120-0150)	203,173			203,173	
0055 Advances to Other Funds (0160)					
0056 (Inc) Dec in Inventories (0170)	(6,592)			(6,592)	
0057 (Inc) Dec in Prepaid Expenses (0180)					
0058 (Inc) Dec in Other Current or Noncurrent Assets					
0064 Deferred Outflows (0910)					
0059 Inc (Dec) in Accounts Payable (0400-0450)	(75,132)			(75,132)	
0060 Inc (Dec) in Accrued Salaries/Benefits (0461)	6,787			6,787	
0065 Inc (Dec) in Net Pension Liabilities (0570)	88,000			88,000	
0066 Inc (Dec) in Other Postemp Benefit Oblig (0560)	245,885			245,885	
0061 Inc (Dec) in Payroll Deductions/Withholding (0462)					
0062 Inc (Dec) in Unearned Revenue (0480)					
0063 Inc (Dec) in Other Current or Noncurrent Liabilities	451,920			451,920	
0067 Deferred Inflows (0950)					
Total Adjustments	\$1,049,672			\$1,049,672	
Cash Provided By (Used for) Total	(\$13,270,850)			(\$13,270,850)	

COMBINED STATEMENT OF CASH FLOWS
SCHEDULE OF NONCASH INVESTING, CAPITAL, AND FINANCING ACTIVITIES

Explanation of Transaction and Balance Sheet Effect	Amount
Total	

LEA : 114067002 Reading SD

General Fund (10)

Printed 1/24/2019 10:59:37 AM

REVIS
ED SUBMISSION

Page - 1 of 4

	Revenue Reported In Current Year	Current Year Tax Accrual	Prior Year Tax Accrual	Taxes Collected In Current Year
Revenue from Local Sources				
6111 Current Real Estate Taxes	19,053,683.73	6,440.53	(27,351.11)	19,019,892.09
6113 Public Utility Realty Taxes	40,705.66			40,705.66
6114 Payments in Lieu of Current Taxes - State / Local	134,345.09			134,345.09
6120 Current Per Capita Taxes, Section 679	91,339.19		1,465.54	92,804.73
6131 Current Act 1 Earned Income Taxes	10,175,297.88	564,820.85	451,480.14	10,061,957.17
6143 Current Act 511 Local Services Taxes	94,762.27	413.30		94,348.97
6145 Current Act 511 Business Privilege Taxes - Flat Rate	976,932.64	142,604.86	5,538.54	839,866.32
6151 Current Act 511 Earned Income Taxes	5,087,648.92	282,410.42	225,740.07	5,030,978.57
6153 Current Act 511 Real Estate Transfer Taxes	567,379.26	75,537.18	38,297.58	530,139.66
6411 Delinquent Real Estate Taxes	2,618,761.80	227,158.95	229,362.77	2,620,965.62
6420 Delinquent Per Capita Taxes, Section 679	5,317.64	85.83		5,231.81
6451 Delinquent Act 511 Earned Income Taxes	33,910.69			33,910.69
6455 Delinquent Act 511 Business Privilege Taxes	70,584.17	145.71		70,438.46
6500 Earnings on Investments	288,122.33			
6700 Revenues from LEA Activities	181,468.40			
6829 State Revenue Received from Other Sources	81,405.06			
6832 Federal IDEA Revenue Received as Pass Through	3,012,065.09			
6910 Rentals	145,647.46			
6920 Contributions and Donations from Private Sources	131,498.18			
6942 Summer School Tuition	37,900.00			
6991 Refunds of a Prior Year Expenditure	1,383,535.64			
6992 Energy Efficiency Revenues and Incentives	109,268.77			
6999 Other Revenues Not Specified Above	472,711.57			
TOTAL Revenue from Local Sources	\$44,794,291.44	\$1,299,617.63	\$924,533.53	\$38,575,584.84

REVISED SUBMISSION

	Revenue Reported In Current Year			
<u>Revenue from State Sources</u>				
7110 Basic Education Funding	131,154,249.63			
7160 Tuition for Orphans Subsidy	214,913.00			
7271 Special Education funds for School-Aged Pupils	10,810,368.00			
7280 Adult Literacy	196,678.00			
7291 Educational Assistance Program (Tutoring)	70,000.00			
7311 Pupil Transportation Subsidy	1,175,961.28			
7312 Nonpublic and Charter School Pupil Transportation Subsidy	333,025.00			
7320 Rental and Sinking Fund Payments / Building Reimbursement Subsidy	5,628,104.00			
7330 Health Services (Medical, Dental, Nurse, Act 25)	380,931.00			
7340 State Property Tax Reduction Allocation	3,680,303.00			
7505 Ready to Learn Block Grant	4,785,693.00			
7810 State Share of Social Security and Medicare Taxes	5,210,690.00			
7820 State Share of Retirement Contributions	21,948,212.00			
TOTAL Revenue from State Sources	\$185,589,127.91			

REVISED SUBMISSION

Revenue Reported
In Current Year

Revenue from Federal Sources

8310 Payments for Federally Impacted Areas - P.L. 81-815	38,077.07			
8390 Other Restricted Federal Grants-in-Aid Directly from the Federal Government	142,208.70			
8514 NCLB, Title I - Improving the Academic Achievement of the Disadvantaged	14,435,135.26			
8515 NCLB, Title II - Preparing, Training and Recruiting High Quality Teachers and Principals	1,189,246.00			
8516 NCLB, Title III - Language Instruction for Limited English Proficient and Immigrant Students	916,400.28			
8517 NCLB, Title IV - 21St Century Schools	322,023.68			
8810 School-Based Access Medicaid Reimbursement Program (SBAP) Reimbursements (Access)	1,200,108.96			
8820 Medical Assistance Reimbursement for Administrative Claiming (Quarterly) Program	139,151.87			
TOTAL Revenue from Federal Sources	\$18,382,351.82			

REVISED SUBMISSION

					Revenue Reported In Current Year
<u>Other Financing Sources</u>					
9990 Insurance Recoveries					38,695.00
TOTAL Other Financing Sources					\$38,695.00
TOTAL FROM ALL SOURCES					\$248,804,466.17
					\$1,299,617.63
					\$924,533.53
					\$38,575,584.84

Revenue from Local Sources	44,794,291.44
Revenue from State Sources	185,589,127.91
Revenue from Federal Sources	18,382,351.82
Other Financing Sources	38,695.00
TOTAL FROM ALL SOURCES	\$248,804,466.17

LEA : 114067002 Reading SD

Printed 1/24/2019 10:59:40 AM

REVISED SUBMISSION

General Fund (10)		
1000 Instruction		<u>Total</u>
100 <u>Personnel Services – Salaries</u>		
100 Personnel Services – Salaries		64,132,159.98
Total Personnel Services – Salaries		\$64,132,159.98
200 <u>Personnel Services – Employee Benefits</u>		
210 Group Insurance – Contracted Provider		17,884,799.56
220 Social Security Contributions		4,845,101.03
230 PSERS Retirement Contributions		19,576,618.23
250 Unemployment Compensation		(21,544.47)
260 Workers' Compensation		940,747.93
299 All Other Employee Benefits		(132,958.70)
Total Personnel Services – Employee Benefits		\$43,092,763.58
300 <u>Purchased Professional and Technical Services</u>		
322 Professional Educational Services – Ius		6,002,085.69
324 Professional Educational Services – Employee Training and Development Services		25,807.00
329 Professional Educational Services – Other		2,034,678.53
330 Other Professional Services		1,726,487.71
340 Technical Services		495.00
390 Other Purchased Professional and Technical Services		50,905.21
Total Purchased Professional and Technical Services		\$9,840,459.14
400 <u>Purchased Property Services</u>		
430 Repairs and Maintenance Services		27,251.15
440 Rentals		7,000.00
Total Purchased Property Services		\$34,251.15
500 <u>Other Purchased Services</u>		
510 Student Transportation Services		139,143.95
550 Printing and Binding		7,008.28
561 Tuition To Other School Districts Within the State		1,741,009.56
562 Tuition To Pennsylvania Charter Schools		9,316,774.16
563 Tuition To Nonpublic Schools		7,095,083.47
564 Tuition To Career and Technology Centers		5,279,045.10
566 Tuition To Institutions of Higher Education and Technical Institutes		2,800.00
567 Tuition To Approved Private Schools (APS) and PA Chartered Schools for the Deaf and Blind		170,041.12
568 Tuition To Private Residential Rehabilitative Institutions (PRRI) [In-State] and Detention Centers		1,212,895.68
580 Travel		126,106.84
599 Other Miscellaneous Purchased Services		65,778.01
Total Other Purchased Services		\$25,155,686.17
600 <u>Supplies</u>		
610 General Supplies		2,784,129.35
630 Food		37,862.40
640 Books and Periodicals		2,190,582.08
Total Supplies		\$5,012,573.83
700 <u>Property</u>		
752 Capital Equipment – Original and Additional		99,566.39

LEA : 114067002 Reading SD

Printed 1/24/2019 10:59:40 AM

REVISED SUBMISSION

General Fund (10)

1000 Instruction		<u>Total</u>
700 <u>Property</u>		
762 Capitalized Equipment - Replacement		1,950.00
Total Property		\$101,516.39
800 <u>Other Objects</u>		
810 Dues and Fees		15,825.65
Total Other Objects		\$15,825.65
Total 1000 Instruction		\$147,385,235.89

LEA : 114067002 Reading SD

Printed 1/24/2019 10:59:40 AM

REVISED SUBMISSION

General Fund (10)				
1100 Regular Programs – Elementary / Secondary				
	Elementary	Secondary	Federal	Total
100 Personnel Services – Salaries				
100 Personnel Services – Salaries	22,105,686.61	20,384,574.40	6,873,420.26	49,363,681.27
Total Personnel Services – Salaries	\$22,105,686.61	\$20,384,574.40	\$6,873,420.26	\$49,363,681.27
200 Personnel Services – Employee Benefits				
210 Group Insurance – Contracted Provider	5,631,295.51	5,194,020.51	2,058,300.00	12,883,616.02
220 Social Security Contributions	1,678,907.30	1,548,533.71	514,403.97	3,741,844.98
230 PSERS Retirement Contributions	6,833,286.53	6,287,675.24	2,042,226.95	15,163,188.72
250 Unemployment Compensation	(14,738.33)	(9,825.54)		(24,563.87)
260 Workers' Compensation	355,378.44	317,725.43	75,608.03	748,711.90
299 All Other Employee Benefits	(94,690.62)	(38,268.08)		(132,958.70)
Total Personnel Services – Employee Benefits	\$14,389,438.83	\$13,299,861.27	\$4,690,538.95	\$32,379,839.05
300 Purchased Professional and Technical Services				
322 Professional Educational Services – Ius	1,493.80	122,337.71		123,831.51
324 Professional Educational Services – Employee Training and Development Services	12,900.00	12,900.00		25,800.00
329 Professional Educational Services – Other	1,087,275.40	705,702.72	231,227.22	2,024,205.34
330 Other Professional Services	63.21	94.89	600.00	758.10
340 Technical Services			495.00	495.00
390 Other Purchased Professional and Technical Services	1,390.00	1,400.00		2,790.00
Total Purchased Professional and Technical Services	\$1,103,122.41	\$842,435.32	\$232,322.22	\$2,177,879.95
400 Purchased Property Services				
430 Repairs and Maintenance Services	16,210.44	10,870.71	170.00	27,251.15
Total Purchased Property Services	\$16,210.44	\$10,870.71	\$170.00	\$27,251.15
500 Other Purchased Services				
510 Student Transportation Services	1,325.75	4,998.49	5,898.53	12,222.77
550 Printing and Binding	1,095.80	224.00		1,319.80
561 Tuition To Other School Districts Within the State	8,696.16	431,478.80		440,174.96
562 Tuition To Pennsylvania Charter Schools	577,151.38	6,306,671.88		6,883,823.26
563 Tuition To Nonpublic Schools	15,642.00	73,750.00		89,392.00
580 Travel	13,562.72	60,456.47		74,019.19
599 Other Miscellaneous Purchased Services	750.00	65,028.01		65,778.01
Total Other Purchased Services	\$618,223.81	\$6,942,607.65	\$5,898.53	\$7,566,729.99
600 Supplies				
610 General Supplies	354,981.62	422,098.50	1,952,660.51	2,729,740.63
630 Food	4,700.82	1,533.31	27.47	6,261.60
640 Books and Periodicals	49,812.69	133,111.69	2,005,054.54	2,187,978.92
Total Supplies	\$409,495.13	\$556,743.50	\$3,957,742.52	\$4,923,981.15
700 Property				
752 Capital Equipment – Original and Additional	3,345.20	4,570.95	73,042.99	80,959.14
762 Capitalized Equipment - Replacement		1,950.00		1,950.00
Total Property	\$3,345.20	\$6,520.95	\$73,042.99	\$82,909.14
800 Other Objects				

LEA : 114067002 Reading SD

Printed 1/24/2019 10:59:40 AM

REVISED SUBMISSION

General Fund (10)				
1100 Regular Programs – Elementary / Secondary	<u>Elementary</u>	<u>Secondary</u>	<u>Federal</u>	<u>Total</u>
800 <u>Other Objects</u>				
810 Dues and Fees		15,825.65		15,825.65
Total Other Objects		\$15,825.65		\$15,825.65
Total 1100 Regular Programs – Elementary / Secondary	\$38,645,522.43	\$42,059,439.45	\$15,833,135.47	\$96,538,097.35

LEA : 114067002 Reading SD

Printed 1/24/2019 10:59:40 AM

REVISED SUBMISSION

General Fund (10)				
1110 Regular Programs	<u>Elementary</u>	<u>Secondary</u>	<u>Federal</u>	<u>Total</u>
100 <u>Personnel Services – Salaries</u>				
100 Personnel Services – Salaries	22,105,686.61	20,384,574.40	88,034.56	42,578,295.57
Total Personnel Services – Salaries	\$22,105,686.61	\$20,384,574.40	\$88,034.56	\$42,578,295.57
200 <u>Personnel Services – Employee Benefits</u>				
210 Group Insurance – Contracted Provider	5,631,295.51	5,194,020.51	17,000.00	10,842,316.02
220 Social Security Contributions	1,678,907.30	1,548,533.71	6,526.49	3,233,967.50
230 PSERS Retirement Contributions	6,833,286.53	6,287,675.24	12,096.83	13,133,058.60
250 Unemployment Compensation	(14,738.33)	(9,825.54)		(24,563.87)
260 Workers' Compensation	355,378.44	317,725.43	968.44	674,072.31
299 All Other Employee Benefits	(94,690.62)	(38,268.08)		(132,958.70)
Total Personnel Services – Employee Benefits	\$14,389,438.83	\$13,299,861.27	\$36,591.76	\$27,725,891.86
300 <u>Purchased Professional and Technical Services</u>				
322 Professional Educational Services – Ius	1,493.80	122,337.71		123,831.51
324 Professional Educational Services – Employee Training and Development Services	12,900.00	12,900.00		25,800.00
329 Professional Educational Services – Other	1,087,275.40	705,702.72		1,792,978.12
330 Other Professional Services	63.21	94.89		158.10
390 Other Purchased Professional and Technical Services	1,390.00	1,400.00		2,790.00
Total Purchased Professional and Technical Services	\$1,103,122.41	\$842,435.32		\$1,945,557.73
400 <u>Purchased Property Services</u>				
430 Repairs and Maintenance Services	16,210.44	10,870.71		27,081.15
Total Purchased Property Services	\$16,210.44	\$10,870.71		\$27,081.15
500 <u>Other Purchased Services</u>				
510 Student Transportation Services	1,325.75	4,998.49		6,324.24
550 Printing and Binding	1,095.80	224.00		1,319.80
561 Tuition To Other School Districts Within the State	8,696.16	431,478.80		440,174.96
562 Tuition To Pennsylvania Charter Schools	577,151.38	6,306,671.88		6,883,823.26
563 Tuition To Nonpublic Schools	15,642.00	73,750.00		89,392.00
580 Travel	13,562.72	60,456.47		74,019.19
599 Other Miscellaneous Purchased Services	750.00	65,028.01		65,778.01
Total Other Purchased Services	\$618,223.81	\$6,942,607.65		\$7,560,831.46
600 <u>Supplies</u>				
610 General Supplies	354,981.62	422,098.50		777,080.12
630 Food	4,700.82	1,533.31		6,234.13
640 Books and Periodicals	49,812.69	133,111.69		182,924.38
Total Supplies	\$409,495.13	\$556,743.50		\$966,238.63
700 <u>Property</u>				
752 Capital Equipment – Original and Additional	3,345.20	4,570.95		7,916.15
762 Capitalized Equipment - Replacement		1,950.00		1,950.00
Total Property	\$3,345.20	\$6,520.95		\$9,866.15
800 <u>Other Objects</u>				
810 Dues and Fees		15,825.65		15,825.65

LEA : 114067002 Reading SD

Printed 1/24/2019 10:59:40 AM

REVISED SUBMISSION

General Fund (10)

1110 Regular Programs

	<u>Elementary</u>	<u>Secondary</u>	<u>Federal</u>	<u>Total</u>
Total Other Objects		\$15,825.65		\$15,825.65
Total 1110 Regular Programs	\$38,645,522.43	\$42,059,439.45	\$124,626.32	\$80,829,588.20

LEA : 114067002 Reading SD

Printed 1/24/2019 10:59:40 AM

REVISED SUBMISSION

General Fund (10)				
1190 Federally-Funded Regular Programs	Elementary	Secondary	Federal	Total
100 Personnel Services – Salaries				
100 Personnel Services – Salaries			6,785,385.70	6,785,385.70
Total Personnel Services – Salaries			\$6,785,385.70	\$6,785,385.70
200 Personnel Services – Employee Benefits				
210 Group Insurance – Contracted Provider			2,041,300.00	2,041,300.00
220 Social Security Contributions			507,877.48	507,877.48
230 PSERS Retirement Contributions			2,030,130.12	2,030,130.12
260 Workers' Compensation			74,639.59	74,639.59
Total Personnel Services – Employee Benefits			\$4,653,947.19	\$4,653,947.19
300 Purchased Professional and Technical Services				
329 Professional Educational Services – Other			231,227.22	231,227.22
330 Other Professional Services			600.00	600.00
340 Technical Services			495.00	495.00
Total Purchased Professional and Technical Services			\$232,322.22	\$232,322.22
400 Purchased Property Services				
430 Repairs and Maintenance Services			170.00	170.00
Total Purchased Property Services			\$170.00	\$170.00
500 Other Purchased Services				
510 Student Transportation Services			5,898.53	5,898.53
Total Other Purchased Services			\$5,898.53	\$5,898.53
600 Supplies				
610 General Supplies			1,952,660.51	1,952,660.51
630 Food			27.47	27.47
640 Books and Periodicals			2,005,054.54	2,005,054.54
Total Supplies			\$3,957,742.52	\$3,957,742.52
700 Property				
752 Capital Equipment – Original and Additional			73,042.99	73,042.99
Total Property			\$73,042.99	\$73,042.99
Total 1190 Federally-Funded Regular Programs			\$15,708,509.15	\$15,708,509.15

LEA : 114067002 Reading SD

Printed 1/24/2019 10:59:40 AM

REVISED SUBMISSION

General Fund (10)				
1200 Special Programs – Elementary / Secondary	Elementary	Secondary	Federal	Total
100 Personnel Services – Salaries				
100 Personnel Services – Salaries	6,038,037.53	5,403,623.13	1,848,745.94	13,290,406.60
Total Personnel Services – Salaries	\$6,038,037.53	\$5,403,623.13	\$1,848,745.94	\$13,290,406.60
200 Personnel Services – Employee Benefits				
210 Group Insurance – Contracted Provider	1,791,588.54	1,730,645.00	1,053,550.00	4,575,783.54
220 Social Security Contributions	466,872.42	387,993.37	137,335.96	992,201.75
230 PSERS Retirement Contributions	1,995,011.55	1,701,969.54	274,952.46	3,971,933.55
250 Unemployment Compensation	1,211.00	1,808.40		3,019.40
260 Workers' Compensation	98,159.97	57,279.95	20,336.77	175,776.69
Total Personnel Services – Employee Benefits	\$4,352,843.48	\$3,879,696.26	\$1,486,175.19	\$9,718,714.93
300 Purchased Professional and Technical Services				
322 Professional Educational Services – lus	851,295.64	1,258,653.02	496,156.58	2,606,105.24
330 Other Professional Services	609,136.76	1,116,592.85		1,725,729.61
Total Purchased Professional and Technical Services	\$1,460,432.40	\$2,375,245.87	\$496,156.58	\$4,331,834.85
500 Other Purchased Services				
510 Student Transportation Services	63,460.59	63,460.59		126,921.18
550 Printing and Binding		5,388.48		5,388.48
561 Tuition To Other School Districts Within the State	23,051.78	1,064,044.97		1,087,096.75
562 Tuition To Pennsylvania Charter Schools	202,708.12	2,230,242.78		2,432,950.90
563 Tuition To Nonpublic Schools	3,748,271.13	2,750,599.92	481,731.00	6,980,602.05
566 Tuition To Institutions of Higher Education and Technical Institutes		2,800.00		2,800.00
567 Tuition To Approved Private Schools (APS) and PA Chartered Schools for the Deaf and Blind			170,041.12	170,041.12
568 Tuition To Private Residential Rehabilitative Institutions (PRRI) [In-State] and Detention Centers	1,212,895.68			1,212,895.68
580 Travel	50,060.07	1,627.67		51,687.74
Total Other Purchased Services	\$5,300,447.37	\$6,118,164.41	\$651,772.12	\$12,070,383.90
600 Supplies				
610 General Supplies	28,740.52	15,674.57	592.99	45,008.08
630 Food	15,800.40	15,800.40		31,600.80
Total Supplies	\$44,540.92	\$31,474.97	\$592.99	\$76,608.88
700 Property				
752 Capital Equipment – Original and Additional	14,058.45	4,548.80		18,607.25
Total Property	\$14,058.45	\$4,548.80		\$18,607.25
Total 1200 Special Programs – Elementary / Secondary	\$17,210,360.15	\$17,812,753.44	\$4,483,442.82	\$39,506,556.41

LEA : 114067002 Reading SD

Printed 1/24/2019 10:59:40 AM

REVISED SUBMISSION

General Fund (10)				
1210 Life Skills Support	Elementary	Secondary	Federal	Total
100 Personnel Services – Salaries				
100 Personnel Services – Salaries	364,254.14	1,131,617.34	206,114.26	1,701,985.74
Total Personnel Services – Salaries	\$364,254.14	\$1,131,617.34	\$206,114.26	\$1,701,985.74
200 Personnel Services – Employee Benefits				
210 Group Insurance – Contracted Provider	157,200.00	318,600.00	125,500.00	601,300.00
220 Social Security Contributions	41,334.49	70,200.18	15,194.10	126,728.77
230 PSERS Retirement Contributions	184,087.20	288,963.70	30,893.14	503,944.04
260 Workers' Compensation	6,067.77	10,387.53	2,267.24	18,722.54
Total Personnel Services – Employee Benefits	\$388,689.46	\$688,151.41	\$173,854.48	\$1,250,695.35
300 Purchased Professional and Technical Services				
322 Professional Educational Services – lus		13,363.92		13,363.92
Total Purchased Professional and Technical Services		\$13,363.92		\$13,363.92
500 Other Purchased Services				
550 Printing and Binding		1,347.12		1,347.12
561 Tuition To Other School Districts Within the State		118,942.75		118,942.75
563 Tuition To Nonpublic Schools	727.46	12,873.88		13,601.34
566 Tuition To Institutions of Higher Education and Technical Institutes		2,800.00		2,800.00
Total Other Purchased Services	\$727.46	\$135,963.75		\$136,691.21
600 Supplies				
610 General Supplies	5,867.43	5,990.77		11,858.20
Total Supplies	\$5,867.43	\$5,990.77		\$11,858.20
700 Property				
752 Capital Equipment – Original and Additional		1,541.30		1,541.30
Total Property		\$1,541.30		\$1,541.30
Total 1210 Life Skills Support	\$759,538.49	\$1,976,628.49	\$379,968.74	\$3,116,135.72

LEA : 114067002 Reading SD

Printed 1/24/2019 10:59:40 AM

REVISED SUBMISSION

General Fund (10)				
1220 Sensory Support	Elementary	Secondary	Federal	Total
100 Personnel Services – Salaries				
100 Personnel Services – Salaries	553,797.52	221,995.02	36,289.86	812,082.40
Total Personnel Services – Salaries	\$553,797.52	\$221,995.02	\$36,289.86	\$812,082.40
200 Personnel Services – Employee Benefits				
210 Group Insurance – Contracted Provider	145,155.00	55,845.00	14,400.00	215,400.00
220 Social Security Contributions	41,524.60	16,636.38	2,587.89	60,748.87
230 PSERS Retirement Contributions	172,343.81	66,827.10	5,449.01	244,619.92
260 Workers' Compensation	6,466.77	2,528.86	399.19	9,394.82
Total Personnel Services – Employee Benefits	\$365,490.18	\$141,837.34	\$22,836.09	\$530,163.61
300 Purchased Professional and Technical Services				
322 Professional Educational Services – Ius	162,964.27	355,528.13	496,156.58	1,014,648.98
330 Other Professional Services	341,596.50	342,316.46		683,912.96
Total Purchased Professional and Technical Services	\$504,560.77	\$697,844.59	\$496,156.58	\$1,698,561.94
500 Other Purchased Services				
563 Tuition To Nonpublic Schools	5,900.00			5,900.00
580 Travel	117.73	117.74		235.47
Total Other Purchased Services	\$6,017.73	\$117.74		\$6,135.47
600 Supplies				
610 General Supplies	3,313.83	468.45	592.99	4,375.27
Total Supplies	\$3,313.83	\$468.45	\$592.99	\$4,375.27
700 Property				
752 Capital Equipment – Original and Additional	5,657.39	3,007.50		8,664.89
Total Property	\$5,657.39	\$3,007.50		\$8,664.89
Total 1220 Sensory Support	\$1,438,837.42	\$1,065,270.64	\$555,875.52	\$3,059,983.58

LEA : 114067002 Reading SD

Printed 1/24/2019 10:59:40 AM

REVISED SUBMISSION

General Fund (10)				
1230 Emotional Support	Elementary	Secondary	Federal	Total
100 <u>Personnel Services – Salaries</u>				
100 Personnel Services – Salaries	1,433,514.21	848,676.95	651,743.62	2,933,934.78
Total Personnel Services – Salaries	\$1,433,514.21	\$848,676.95	\$651,743.62	\$2,933,934.78
200 <u>Personnel Services – Employee Benefits</u>				
210 Group Insurance – Contracted Provider	464,119.33	345,650.00	378,300.00	1,188,069.33
220 Social Security Contributions	107,198.07	63,144.77	48,589.16	218,932.00
230 PSERS Retirement Contributions	470,697.34	309,096.63	97,608.57	877,402.54
250 Unemployment Compensation	1,211.00			1,211.00
260 Workers' Compensation	15,769.29	9,335.51	7,169.43	32,274.23
Total Personnel Services – Employee Benefits	\$1,058,995.03	\$727,226.91	\$531,667.16	\$2,317,889.10
300 <u>Purchased Professional and Technical Services</u>				
322 Professional Educational Services – lus	184,597.40	353,792.13		538,389.53
330 Other Professional Services	29,410.50	32,720.53		62,131.03
Total Purchased Professional and Technical Services	\$214,007.90	\$386,512.66		\$600,520.56
500 <u>Other Purchased Services</u>				
550 Printing and Binding		2,694.24		2,694.24
561 Tuition To Other School Districts Within the State	21,971.78	475,996.16		497,967.94
563 Tuition To Nonpublic Schools	3,706,623.09	2,648,713.14	481,731.00	6,837,067.23
567 Tuition To Approved Private Schools (APS) and PA Chartered Schools for the Deaf and Blind			170,041.12	170,041.12
580 Travel	49,088.53			49,088.53
Total Other Purchased Services	\$3,777,683.40	\$3,127,403.54	\$651,772.12	\$7,556,859.06
600 <u>Supplies</u>				
610 General Supplies	6,798.05	2,980.76		9,778.81
Total Supplies	\$6,798.05	\$2,980.76		\$9,778.81
Total 1230 Emotional Support	\$6,490,998.59	\$5,092,800.82	\$1,835,182.90	\$13,418,982.31

LEA : 114067002 Reading SD

Printed 1/24/2019 10:59:40 AM

REVISED SUBMISSION

General Fund (10)				
1240 Academic Support	Elementary	Secondary	Federal	Total
100 <u>Personnel Services – Salaries</u>				
100 Personnel Services – Salaries	3,448,317.21	2,931,631.63	832,123.67	7,212,072.51
Total Personnel Services – Salaries	\$3,448,317.21	\$2,931,631.63	\$832,123.67	\$7,212,072.51
200 <u>Personnel Services – Employee Benefits</u>				
210 Group Insurance – Contracted Provider	907,014.21	891,150.00	461,550.00	2,259,714.21
220 Social Security Contributions	259,122.64	217,794.81	61,881.60	538,799.05
230 PSERS Retirement Contributions	1,093,262.19	941,572.76	122,706.40	2,157,541.35
250 Unemployment Compensation		1,808.40		1,808.40
260 Workers' Compensation	67,236.46	32,061.09	9,153.54	108,451.09
Total Personnel Services – Employee Benefits	\$2,326,635.50	\$2,084,387.06	\$655,291.54	\$5,066,314.10
300 <u>Purchased Professional and Technical Services</u>				
322 Professional Educational Services – lus	118,490.75	50,464.30		168,955.05
330 Other Professional Services		1,515.00		1,515.00
Total Purchased Professional and Technical Services	\$118,490.75	\$51,979.30		\$170,470.05
500 <u>Other Purchased Services</u>				
510 Student Transportation Services	63,460.59	63,460.59		126,921.18
550 Printing and Binding		1,347.12		1,347.12
561 Tuition To Other School Districts Within the State	1,080.00	469,106.06		470,186.06
563 Tuition To Nonpublic Schools	35,020.58	89,012.90		124,033.48
580 Travel		241.51		241.51
Total Other Purchased Services	\$99,561.17	\$623,168.18		\$722,729.35
600 <u>Supplies</u>				
610 General Supplies	2,619.84	2,096.01		4,715.85
Total Supplies	\$2,619.84	\$2,096.01		\$4,715.85
Total 1240 Academic Support	\$5,995,624.47	\$5,693,262.18	\$1,487,415.21	\$13,176,301.86

LEA : 114067002 Reading SD

Printed 1/24/2019 10:59:40 AM

REVISED SUBMISSION

General Fund (10)				
1241 Learning Support – Public	Elementary	Secondary	Federal	Total
100 Personnel Services – Salaries				
100 Personnel Services – Salaries	3,133,801.45	2,641,301.83	832,123.67	6,607,226.95
Total Personnel Services – Salaries	\$3,133,801.45	\$2,641,301.83	\$832,123.67	\$6,607,226.95
200 Personnel Services – Employee Benefits				
210 Group Insurance – Contracted Provider	839,014.21	820,850.00	461,550.00	2,121,414.21
220 Social Security Contributions	235,400.21	196,094.27	61,881.60	493,376.08
230 PSERS Retirement Contributions	999,122.37	855,507.32	122,706.40	1,977,336.09
250 Unemployment Compensation		1,808.40		1,808.40
260 Workers' Compensation	63,776.54	28,867.43	9,153.54	101,797.51
Total Personnel Services – Employee Benefits	\$2,137,313.33	\$1,903,127.42	\$655,291.54	\$4,695,732.29
300 Purchased Professional and Technical Services				
322 Professional Educational Services – lus	118,490.75	50,464.30		168,955.05
330 Other Professional Services		1,515.00		1,515.00
Total Purchased Professional and Technical Services	\$118,490.75	\$51,979.30		\$170,470.05
500 Other Purchased Services				
510 Student Transportation Services	63,460.59	63,460.59		126,921.18
550 Printing and Binding		1,347.12		1,347.12
561 Tuition To Other School Districts Within the State	1,080.00	411,112.99		412,192.99
563 Tuition To Nonpublic Schools	35,020.58	89,012.90		124,033.48
Total Other Purchased Services	\$99,561.17	\$564,933.60		\$664,494.77
600 Supplies				
610 General Supplies	2,619.84	2,096.01		4,715.85
Total Supplies	\$2,619.84	\$2,096.01		\$4,715.85
Total 1241 Learning Support – Public	\$5,491,786.54	\$5,163,438.16	\$1,487,415.21	\$12,142,639.91

LEA : 114067002 Reading SD

Printed 1/24/2019 10:59:40 AM

REVISED SUBMISSION

General Fund (10)

1243 Gifted Support

	<u>Elementary</u>	<u>Secondary</u>	<u>Federal</u>	<u>Total</u>
100 <u>Personnel Services – Salaries</u>				
100 Personnel Services – Salaries	314,515.76	290,329.80		604,845.56
Total Personnel Services – Salaries	\$314,515.76	\$290,329.80		\$604,845.56
200 <u>Personnel Services – Employee Benefits</u>				
210 Group Insurance – Contracted Provider	68,000.00	70,300.00		138,300.00
220 Social Security Contributions	23,722.43	21,700.54		45,422.97
230 PSERS Retirement Contributions	94,139.82	86,065.44		180,205.26
260 Workers' Compensation	3,459.92	3,193.66		6,653.58
Total Personnel Services – Employee Benefits	\$189,322.17	\$181,259.64		\$370,581.81
500 <u>Other Purchased Services</u>				
561 Tuition To Other School Districts Within the State		57,993.07		57,993.07
580 Travel		241.51		241.51
Total Other Purchased Services		\$58,234.58		\$58,234.58
Total 1243 Gifted Support	\$503,837.93	\$529,824.02		\$1,033,661.95

LEA : 114067002 Reading SD

Printed 1/24/2019 10:59:40 AM

REVISED SUBMISSION

General Fund (10)

1260 Physical Support	<u>Elementary</u>	<u>Secondary</u>	<u>Federal</u>	<u>Total</u>
100 <u>Personnel Services – Salaries</u>				
100 Personnel Services – Salaries			22,843.16	22,843.16
Total Personnel Services – Salaries			\$22,843.16	\$22,843.16
200 <u>Personnel Services – Employee Benefits</u>				
210 Group Insurance – Contracted Provider			17,000.00	17,000.00
220 Social Security Contributions			1,703.29	1,703.29
230 PSERS Retirement Contributions		3,429.90	3,429.90	6,859.80
260 Workers' Compensation			251.30	251.30
Total Personnel Services – Employee Benefits		\$3,429.90	\$22,384.49	\$25,814.39
Total 1260 Physical Support		\$3,429.90	\$45,227.65	\$48,657.55

LEA : 114067002 Reading SD

Printed 1/24/2019 10:59:40 AM

REVISED SUBMISSION

General Fund (10)				
1270 Multi-Handicapped Support	Elementary	Secondary	Federal	Total
100 Personnel Services – Salaries				
100 Personnel Services – Salaries	216,949.28	249,459.38	99,631.37	566,040.03
Total Personnel Services – Salaries	\$216,949.28	\$249,459.38	\$99,631.37	\$566,040.03
200 Personnel Services – Employee Benefits				
210 Group Insurance – Contracted Provider	101,100.00	119,400.00	56,800.00	277,300.00
220 Social Security Contributions	16,112.31	18,708.90	7,379.92	42,201.13
230 PSERS Retirement Contributions	68,253.11	86,000.65	14,865.44	169,119.20
260 Workers' Compensation	2,386.32	2,744.22	1,096.07	6,226.61
Total Personnel Services – Employee Benefits	\$187,851.74	\$226,853.77	\$80,141.43	\$494,846.94
300 Purchased Professional and Technical Services				
322 Professional Educational Services – Ius		55,886.94		55,886.94
Total Purchased Professional and Technical Services		\$55,886.94		\$55,886.94
500 Other Purchased Services				
580 Travel		414.61		414.61
Total Other Purchased Services		\$414.61		\$414.61
600 Supplies				
610 General Supplies	8,592.72	2,589.93		11,182.65
Total Supplies	\$8,592.72	\$2,589.93		\$11,182.65
700 Property				
752 Capital Equipment – Original and Additional	8,401.06			8,401.06
Total Property	\$8,401.06			\$8,401.06
Total 1270 Multi-Handicapped Support	\$421,794.80	\$535,204.63	\$179,772.80	\$1,136,772.23

LEA : 114067002 Reading SD

Printed 1/24/2019 10:59:40 AM

REVISED SUBMISSION

General Fund (10)

1280 Early Intervention Support

	<u>Elementary</u>	<u>Secondary</u>	<u>Federal</u>	<u>Total</u>
300 <u>Purchased Professional and Technical Services</u>				
322 Professional Educational Services – lus	88,022.76			88,022.76
Total Purchased Professional and Technical Services	\$88,022.76			\$88,022.76
Total 1280 Early Intervention Support	\$88,022.76			\$88,022.76

LEA : 114067002 Reading SD

Printed 1/24/2019 10:59:40 AM

REVISED SUBMISSION

General Fund (10)				
1290 Special Programs - Other Support	Elementary	Secondary	Federal	Total
100 Personnel Services – Salaries				
100 Personnel Services – Salaries	21,205.17	20,242.81		41,447.98
Total Personnel Services – Salaries	\$21,205.17	\$20,242.81		\$41,447.98
200 Personnel Services – Employee Benefits				
210 Group Insurance – Contracted Provider	17,000.00			17,000.00
220 Social Security Contributions	1,580.31	1,508.33		3,088.64
230 PSERS Retirement Contributions	6,367.90	6,078.80		12,446.70
260 Workers' Compensation	233.36	222.74		456.10
Total Personnel Services – Employee Benefits	\$25,181.57	\$7,809.87		\$32,991.44
300 Purchased Professional and Technical Services				
322 Professional Educational Services – Ius	297,220.46	429,617.60		726,838.06
330 Other Professional Services	238,129.76	740,040.86		978,170.62
Total Purchased Professional and Technical Services	\$535,350.22	\$1,169,658.46		\$1,705,008.68
500 Other Purchased Services				
562 Tuition To Pennsylvania Charter Schools	202,708.12	2,230,242.78		2,432,950.90
568 Tuition To Private Residential Rehabilitative Institutions (PRRI) [In-State] and Detention Centers	1,212,895.68			1,212,895.68
580 Travel	853.81	853.81		1,707.62
Total Other Purchased Services	\$1,416,457.61	\$2,231,096.59		\$3,647,554.20
600 Supplies				
610 General Supplies	1,548.65	1,548.65		3,097.30
630 Food	15,800.40	15,800.40		31,600.80
Total Supplies	\$17,349.05	\$17,349.05		\$34,698.10
Total 1290 Special Programs - Other Support	\$2,015,543.62	\$3,446,156.78		\$5,461,700.40

LEA : 114067002 Reading SD

Printed 1/24/2019 10:59:40 AM

REVISED SUBMISSION

General Fund (10)

1300 Vocational Education

<u>Elementary</u>	<u>Secondary</u>	<u>Federal</u>	<u>Total</u>
-------------------	------------------	----------------	--------------

500 Other Purchased Services

564 Tuition To Career and Technology Centers	5,279,045.10		5,279,045.10
--	--------------	--	--------------

Total Other Purchased Services	\$5,279,045.10		\$5,279,045.10
---------------------------------------	-----------------------	--	-----------------------

Total 1300 Vocational Education	\$5,279,045.10		\$5,279,045.10
--	-----------------------	--	-----------------------

LEA : 114067002 Reading SD

Printed 1/24/2019 10:59:40 AM

REVISED SUBMISSION

General Fund (10)				
1400 Other Instructional Programs – Elementary / Secondary	<u>Elementary</u>	<u>Secondary</u>	<u>Federal</u>	<u>Total</u>
100 <u>Personnel Services – Salaries</u>				
100 Personnel Services – Salaries	7,175.25	148,960.29	85,608.90	241,744.44
Total Personnel Services – Salaries	\$7,175.25	\$148,960.29	\$85,608.90	\$241,744.44
200 <u>Personnel Services – Employee Benefits</u>				
210 Group Insurance – Contracted Provider		17,000.00		17,000.00
220 Social Security Contributions	548.68	11,311.42	6,539.71	18,399.81
230 PSERS Retirement Contributions	2,154.72	57,221.21	12,749.50	72,125.43
260 Workers' Compensation	78.94	1,638.73	942.06	2,659.73
Total Personnel Services – Employee Benefits	\$2,782.34	\$87,171.36	\$20,231.27	\$110,184.97
300 <u>Purchased Professional and Technical Services</u>				
322 Professional Educational Services – Ius		2,895,884.25		2,895,884.25
390 Other Purchased Professional and Technical Services			48,115.21	48,115.21
Total Purchased Professional and Technical Services		\$2,895,884.25	\$48,115.21	\$2,943,999.46
500 <u>Other Purchased Services</u>				
561 Tuition To Other School Districts Within the State		213,737.85		213,737.85
563 Tuition To Nonpublic Schools	1,002.00	24,087.42		25,089.42
Total Other Purchased Services	\$1,002.00	\$237,825.27		\$238,827.27
600 <u>Supplies</u>				
610 General Supplies			2,714.74	2,714.74
Total Supplies			\$2,714.74	\$2,714.74
Total 1400 Other Instructional Programs – Elementary / Secondary	\$10,959.59	\$3,369,841.17	\$156,670.12	\$3,537,470.88

LEA : 114067002 Reading SD

Printed 1/24/2019 10:59:40 AM

REVISED SUBMISSION

General Fund (10)

1420 Summer School	<u>Elementary</u>	<u>Secondary</u>	<u>Federal</u>	<u>Total</u>
100 <u>Personnel Services – Salaries</u>				
100 Personnel Services – Salaries		46,912.00	21,444.75	68,356.75
Total Personnel Services – Salaries		\$46,912.00	\$21,444.75	\$68,356.75
200 <u>Personnel Services – Employee Benefits</u>				
220 Social Security Contributions		3,588.81	1,640.52	5,229.33
230 PSERS Retirement Contributions		17,009.30	3,115.14	20,124.44
260 Workers’ Compensation		516.07	235.89	751.96
Total Personnel Services – Employee Benefits		\$21,114.18	\$4,991.55	\$26,105.73
300 <u>Purchased Professional and Technical Services</u>				
390 Other Purchased Professional and Technical Services			10,363.46	10,363.46
Total Purchased Professional and Technical Services			\$10,363.46	\$10,363.46
Total 1420 Summer School		\$68,026.18	\$36,799.76	\$104,825.94

LEA : 114067002 Reading SD

Printed 1/24/2019 10:59:40 AM

REVISED SUBMISSION

General Fund (10)

1430 Homebound Instruction	<u>Elementary</u>	<u>Secondary</u>	<u>Federal</u>	<u>Total</u>
100 <u>Personnel Services – Salaries</u>				
100 Personnel Services – Salaries	7,175.25	34,980.75		42,156.00
Total Personnel Services – Salaries	\$7,175.25	\$34,980.75		\$42,156.00
200 <u>Personnel Services – Employee Benefits</u>				
220 Social Security Contributions	548.68	2,675.65		3,224.33
230 PSERS Retirement Contributions	2,154.72	10,503.60		12,658.32
260 Workers’ Compensation	78.94	384.86		463.80
Total Personnel Services – Employee Benefits	\$2,782.34	\$13,564.11		\$16,346.45
500 <u>Other Purchased Services</u>				
563 Tuition To Nonpublic Schools	1,002.00	2,715.04		3,717.04
Total Other Purchased Services	\$1,002.00	\$2,715.04		\$3,717.04
Total 1430 Homebound Instruction	\$10,959.59	\$51,259.90		\$62,219.49

LEA : 114067002 Reading SD

Printed 1/24/2019 10:59:40 AM

REVISED SUBMISSION

General Fund (10)

1440 Alternative Regular Education Programs	<u>Elementary</u>	<u>Secondary</u>	<u>Federal</u>	<u>Total</u>
100 <u>Personnel Services – Salaries</u>				
100 Personnel Services – Salaries		67,067.54		67,067.54
Total Personnel Services – Salaries		\$67,067.54		\$67,067.54
200 <u>Personnel Services – Employee Benefits</u>				
210 Group Insurance – Contracted Provider		17,000.00		17,000.00
220 Social Security Contributions		5,046.96		5,046.96
230 PSERS Retirement Contributions		19,994.90		19,994.90
260 Workers' Compensation		737.80		737.80
Total Personnel Services – Employee Benefits		\$42,779.66		\$42,779.66
300 <u>Purchased Professional and Technical Services</u>				
322 Professional Educational Services – Ius		2,895,884.25		2,895,884.25
Total Purchased Professional and Technical Services		\$2,895,884.25		\$2,895,884.25
500 <u>Other Purchased Services</u>				
561 Tuition To Other School Districts Within the State		213,737.85		213,737.85
563 Tuition To Nonpublic Schools		21,372.38		21,372.38
Total Other Purchased Services		\$235,110.23		\$235,110.23
Total 1440 Alternative Regular Education Programs		\$3,240,841.68		\$3,240,841.68

LEA : 114067002 Reading SD

Printed 1/24/2019 10:59:40 AM

REVISED SUBMISSION

General Fund (10)

1441 Adjudicated / Court-Placed Programs	<u>Elementary</u>	<u>Secondary</u>	<u>Federal</u>	<u>Total</u>
300 <u>Purchased Professional and Technical Services</u>				
322 Professional Educational Services – Ius		549,223.45		549,223.45
Total Purchased Professional and Technical Services		\$549,223.45		\$549,223.45
500 <u>Other Purchased Services</u>				
561 Tuition To Other School Districts Within the State		213,737.85		213,737.85
563 Tuition To Nonpublic Schools		21,372.38		21,372.38
Total Other Purchased Services		\$235,110.23		\$235,110.23
Total 1441 Adjudicated / Court-Placed Programs		\$784,333.68		\$784,333.68

LEA : 114067002 Reading SD

Printed 1/24/2019 10:59:40 AM

REVISED SUBMISSION

General Fund (10)

1442 Alternative Education Programs	<u>Elementary</u>	<u>Secondary</u>	<u>Federal</u>	<u>Total</u>
100 <u>Personnel Services – Salaries</u>				
100 Personnel Services – Salaries		67,067.54		67,067.54
Total Personnel Services – Salaries		\$67,067.54		\$67,067.54
200 <u>Personnel Services – Employee Benefits</u>				
210 Group Insurance – Contracted Provider		17,000.00		17,000.00
220 Social Security Contributions		5,046.96		5,046.96
230 PSERS Retirement Contributions		19,994.90		19,994.90
260 Workers' Compensation		737.80		737.80
Total Personnel Services – Employee Benefits		\$42,779.66		\$42,779.66
300 <u>Purchased Professional and Technical Services</u>				
322 Professional Educational Services – Ius		2,346,660.80		2,346,660.80
Total Purchased Professional and Technical Services		\$2,346,660.80		\$2,346,660.80
Total 1442 Alternative Education Programs		\$2,456,508.00		\$2,456,508.00

LEA : 114067002 Reading SD

Printed 1/24/2019 10:59:40 AM

REVISED SUBMISSION

General Fund (10)				
1490 Additional Other Instructional Programs	<u>Elementary</u>	<u>Secondary</u>	<u>Federal</u>	<u>Total</u>
100 <u>Personnel Services – Salaries</u>				
100 Personnel Services – Salaries			64,164.15	64,164.15
Total Personnel Services – Salaries			\$64,164.15	\$64,164.15
200 <u>Personnel Services – Employee Benefits</u>				
220 Social Security Contributions			4,899.19	4,899.19
230 PSERS Retirement Contributions		9,713.41	9,634.36	19,347.77
260 Workers’ Compensation			706.17	706.17
Total Personnel Services – Employee Benefits		\$9,713.41	\$15,239.72	\$24,953.13
300 <u>Purchased Professional and Technical Services</u>				
390 Other Purchased Professional and Technical Services			37,751.75	37,751.75
Total Purchased Professional and Technical Services			\$37,751.75	\$37,751.75
600 <u>Supplies</u>				
610 General Supplies			2,714.74	2,714.74
Total Supplies			\$2,714.74	\$2,714.74
Total 1490 Additional Other Instructional Programs		\$9,713.41	\$119,870.36	\$129,583.77

LEA : 114067002 Reading SD

Printed 1/24/2019 10:59:40 AM

REVISED SUBMISSION

General Fund (10)

1500 Nonpublic School Programs

Elementary Secondary Federal Total

300 Purchased Professional and Technical Services

322 Professional Educational Services – Ius			375,262.69	375,262.69
329 Professional Educational Services – Other			10,473.19	10,473.19

Total Purchased Professional and Technical Services			\$385,735.88	\$385,735.88
Total 1500 Nonpublic School Programs			\$385,735.88	\$385,735.88

LEA : 114067002 Reading SD

Printed 1/24/2019 10:59:40 AM

REVISED SUBMISSION

General Fund (10)				
1600 Adult Education Programs	Elementary	Secondary	Federal	Total
100 Personnel Services – Salaries				
100 Personnel Services – Salaries				124,212.41
Total Personnel Services – Salaries				\$124,212.41
200 Personnel Services – Employee Benefits				
220 Social Security Contributions				9,502.25
230 PSERS Retirement Contributions				36,467.35
260 Workers’ Compensation				1,365.98
Total Personnel Services – Employee Benefits				\$47,335.58
300 Purchased Professional and Technical Services				
322 Professional Educational Services – Ius				1,002.00
324 Professional Educational Services – Employee Training and Development Services				7.00
Total Purchased Professional and Technical Services				\$1,009.00
400 Purchased Property Services				
440 Rentals				7,000.00
Total Purchased Property Services				\$7,000.00
500 Other Purchased Services				
550 Printing and Binding				300.00
580 Travel				399.91
Total Other Purchased Services				\$699.91
600 Supplies				
610 General Supplies				2,905.58
640 Books and Periodicals				2,603.16
Total Supplies				\$5,508.74
Total 1600 Adult Education Programs				\$185,765.64

LEA : 114067002 Reading SD

Printed 1/24/2019 10:59:40 AM

REVISED SUBMISSION

General Fund (10)				
1800 Pre-Kindergarten	<u>Elementary</u>	<u>Secondary</u>	<u>Federal</u>	<u>Total</u>
100 <u>Personnel Services – Salaries</u>				
100 Personnel Services – Salaries				1,112,115.26
Total Personnel Services – Salaries				\$1,112,115.26
200 <u>Personnel Services – Employee Benefits</u>				
210 Group Insurance – Contracted Provider				408,400.00
220 Social Security Contributions				83,152.24
230 PSERS Retirement Contributions				332,903.18
260 Workers' Compensation				12,233.63
Total Personnel Services – Employee Benefits				\$836,689.05
600 <u>Supplies</u>				
610 General Supplies				3,760.32
Total Supplies				\$3,760.32
Total 1800 Pre-Kindergarten				\$1,952,564.63

LEA : 114067002 Reading SD

Printed 1/24/2019 10:59:40 AM

REVISED SUBMISSION

General Fund (10)

1801 Pre-K Instruction

Elementary Secondary Federal Total

100 Personnel Services – Salaries

100 Personnel Services – Salaries 1,046,930.12

Total Personnel Services – Salaries \$1,046,930.12

200 Personnel Services – Employee Benefits

210 Group Insurance – Contracted Provider 357,400.00

220 Social Security Contributions 78,358.22

230 PSERS Retirement Contributions 313,327.88

260 Workers' Compensation 11,516.66

Total Personnel Services – Employee Benefits \$760,602.76

600 Supplies

610 General Supplies 3,760.32

Total Supplies \$3,760.32

Total 1801 Pre-K Instruction \$1,811,293.20

LEA : 114067002 Reading SD

Printed 1/24/2019 10:59:40 AM

REVISED SUBMISSION

General Fund (10)

1802 Pre-K Administrative Support	<u>Elementary</u>	<u>Secondary</u>	<u>Federal</u>	<u>Total</u>
100 <u>Personnel Services – Salaries</u>				
100 Personnel Services – Salaries				65,185.14
Total Personnel Services – Salaries				\$65,185.14
200 <u>Personnel Services – Employee Benefits</u>				
210 Group Insurance – Contracted Provider				51,000.00
220 Social Security Contributions				4,794.02
230 PSERS Retirement Contributions				19,575.30
260 Workers' Compensation				716.97
Total Personnel Services – Employee Benefits				\$76,086.29
Total 1802 Pre-K Administrative Support				\$141,271.43

LEA : 114067002 Reading SD

Printed 1/24/2019 10:59:43 AM

REVISED SUBMISSION

General Fund (10)	
2000 Support Services	<u>Total</u>
100 <u>Personnel Services – Salaries</u>	
100 Personnel Services – Salaries	23,937,296.92
Total Personnel Services – Salaries	\$23,937,296.92
200 <u>Personnel Services – Employee Benefits</u>	
210 Group Insurance – Contracted Provider	7,278,227.18
220 Social Security Contributions	1,835,037.18
230 PSERS Retirement Contributions	7,143,080.11
240 Tuition Reimbursement	202,244.50
250 Unemployment Compensation	85,551.41
260 Workers' Compensation	316,494.00
280 Other Post-Employment Benefits (OPEB)	6,689,199.60
291 Other Retirement Plans	34,136.18
299 All Other Employee Benefits	(91,438.31)
Total Personnel Services – Employee Benefits	\$23,492,531.85
300 <u>Purchased Professional and Technical Services</u>	
310 Official / Administrative Services	61,362.12
322 Professional Educational Services – Ius	326,497.62
323 Professional Educational Services – Other Educational Agencies	28,813.66
324 Professional Educational Services – Employee Training and Development Services	330,484.55
329 Professional Educational Services – Other	63,803.44
330 Other Professional Services	2,510,189.72
340 Technical Services	369,175.25
390 Other Purchased Professional and Technical Services	4,761.80
Total Purchased Professional and Technical Services	\$3,695,088.16
400 <u>Purchased Property Services</u>	
410 Cleaning Services	102,297.67
420 Utility Services	2,356,991.55
430 Repairs and Maintenance Services	804,605.62
440 Rentals	549,781.37
460 Extermination Services	19,169.00
490 Other Purchased Property Services	2,995.44
Total Purchased Property Services	\$3,835,840.65
500 <u>Other Purchased Services</u>	
513 Contracted Carriers	2,959.90
516 Student Transportation Services From the IU	5,013,964.72
520 Insurance – General	914,761.50
521 Fire Insurance	27,787.00
522 Automotive Liability Insurance	77,708.00
529 Other Insurance	3,091.00
530 Communications	493,820.66
549 Other Advertising/Public Relations	23,210.20
550 Printing and Binding	8,999.78
580 Travel	70,407.46
591 Services Purchased Locally	50.00

LEA : 114067002 Reading SD

Printed 1/24/2019 10:59:43 AM

REVISED SUBMISSION

General Fund (10)

2000 Support Services

Total

500 <u>Other Purchased Services</u>	
595 IU Payments By Withholding	42,770.68
599 Other Miscellaneous Purchased Services	596.00
Total Other Purchased Services	\$6,680,126.90
600 <u>Supplies</u>	
610 General Supplies	3,532,846.98
620 Energy	850,633.42
630 Food	28,733.81
640 Books and Periodicals	235,142.21
Total Supplies	\$4,647,356.42
800 <u>Other Objects</u>	
810 Dues and Fees	134,470.86
890 Miscellaneous Expenditures	525,129.41
Total Other Objects	\$659,600.27
Total 2000 Support Services	\$66,947,841.17

LEA : 114067002 Reading SD

Printed 1/24/2019 10:59:43 AM

REVISED SUBMISSION

General Fund (10)				
2100 Support Services – Students	Elementary	Secondary	Federal	Total
100 Personnel Services – Salaries				
100 Personnel Services – Salaries	1,140,174.28	1,814,816.38	865,944.75	4,583,188.80
Total Personnel Services – Salaries	\$1,140,174.28	\$1,814,816.38	\$865,944.75	\$4,583,188.80
200 Personnel Services – Employee Benefits				
210 Group Insurance – Contracted Provider	309,937.50	484,862.50	174,900.00	1,189,900.00
220 Social Security Contributions	85,722.36	135,511.15	65,367.58	343,713.28
230 PSERS Retirement Contributions	422,125.87	587,442.34	129,269.83	1,362,324.68
260 Workers' Compensation	12,986.81	20,358.42	9,526.49	50,037.11
Total Personnel Services – Employee Benefits	\$830,772.54	\$1,228,174.41	\$379,063.90	\$2,945,975.07
300 Purchased Professional and Technical Services				
323 Professional Educational Services – Other Educational Agencies			28,813.66	28,813.66
324 Professional Educational Services – Employee Training and Development Services	847.50	847.50		5,510.00
329 Professional Educational Services – Other	3,300.40	55,780.40		59,080.80
330 Other Professional Services	10,942.75	38,553.55		49,496.30
Total Purchased Professional and Technical Services	\$15,090.65	\$95,181.45	\$28,813.66	\$142,900.76
500 Other Purchased Services				
550 Printing and Binding				693.00
580 Travel	344.47	264.98		3,651.49
Total Other Purchased Services	\$344.47	\$264.98		\$4,344.49
600 Supplies				
610 General Supplies	17,867.53	20,955.51		38,823.04
640 Books and Periodicals				2,232.00
Total Supplies	\$17,867.53	\$20,955.51		\$41,055.04
800 Other Objects				
810 Dues and Fees	300.00	300.00		600.00
Total Other Objects	\$300.00	\$300.00		\$600.00
Total 2100 Support Services – Students	\$2,004,549.47	\$3,159,692.73	\$1,273,822.31	\$7,718,064.16

LEA : 114067002 Reading SD

Printed 1/24/2019 10:59:43 AM

REVISED SUBMISSION

General Fund (10)				
2110 Supervision of Student Services	Elementary	Secondary	Federal	Total
100 Personnel Services – Salaries				
100 Personnel Services – Salaries	141,198.55	196,534.88		337,733.43
Total Personnel Services – Salaries	\$141,198.55	\$196,534.88		\$337,733.43
200 Personnel Services – Employee Benefits				
210 Group Insurance – Contracted Provider	48,687.50	65,562.50		114,250.00
220 Social Security Contributions	11,063.22	14,374.49		25,437.71
230 PSERS Retirement Contributions	42,671.24	55,050.98		97,722.22
260 Workers' Compensation	1,616.09	2,098.64		3,714.73
Total Personnel Services – Employee Benefits	\$104,038.05	\$137,086.61		\$241,124.66
300 Purchased Professional and Technical Services				
324 Professional Educational Services – Employee Training and Development Services	847.50	847.50		1,695.00
329 Professional Educational Services – Other	3,300.40	55,780.40		59,080.80
330 Other Professional Services	4,692.75	4,692.75		9,385.50
Total Purchased Professional and Technical Services	\$8,840.65	\$61,320.65		\$70,161.30
500 Other Purchased Services				
580 Travel	238.54	159.04		397.58
Total Other Purchased Services	\$238.54	\$159.04		\$397.58
600 Supplies				
610 General Supplies	2,728.50	2,728.50		5,457.00
Total Supplies	\$2,728.50	\$2,728.50		\$5,457.00
800 Other Objects				
810 Dues and Fees	300.00	300.00		600.00
Total Other Objects	\$300.00	\$300.00		\$600.00
Total 2110 Supervision of Student Services	\$257,344.29	\$398,129.68		\$655,473.97

General Fund (10)

2111 Supervision of Student Services – Head of Component	<u>Elementary</u>	<u>Secondary</u>	<u>Federal</u>	<u>Total</u>
100 <u>Personnel Services – Salaries</u>				
100 Personnel Services – Salaries	55,483.76	55,483.76		110,967.52
Total Personnel Services – Salaries	\$55,483.76	\$55,483.76		\$110,967.52
200 <u>Personnel Services – Employee Benefits</u>				
210 Group Insurance – Contracted Provider	8,725.00	8,725.00		17,450.00
220 Social Security Contributions	4,145.95	4,145.95		8,291.90
230 PSERS Retirement Contributions	16,448.64	16,448.64		32,897.28
260 Workers' Compensation	610.36	610.36		1,220.72
Total Personnel Services – Employee Benefits	\$29,929.95	\$29,929.95		\$59,859.90
Total 2111 Supervision of Student Services – Head of Component	\$85,413.71	\$85,413.71		\$170,827.42

LEA : 114067002 Reading SD

Printed 1/24/2019 10:59:43 AM

REVISED SUBMISSION

General Fund (10)				
2119 Supervision of Student Services – All Other Supervision	<u>Elementary</u>	<u>Secondary</u>	<u>Federal</u>	<u>Total</u>
100 <u>Personnel Services – Salaries</u>				
100 Personnel Services – Salaries	85,714.79	141,051.12		226,765.91
Total Personnel Services – Salaries	\$85,714.79	\$141,051.12		\$226,765.91
200 <u>Personnel Services – Employee Benefits</u>				
210 Group Insurance – Contracted Provider	39,962.50	56,837.50		96,800.00
220 Social Security Contributions	6,917.27	10,228.54		17,145.81
230 PSERS Retirement Contributions	26,222.60	38,602.34		64,824.94
260 Workers' Compensation	1,005.73	1,488.28		2,494.01
Total Personnel Services – Employee Benefits	\$74,108.10	\$107,156.66		\$181,264.76
300 <u>Purchased Professional and Technical Services</u>				
324 Professional Educational Services – Employee Training and Development Services	847.50	847.50		1,695.00
329 Professional Educational Services – Other	3,300.40	55,780.40		59,080.80
330 Other Professional Services	4,692.75	4,692.75		9,385.50
Total Purchased Professional and Technical Services	\$8,840.65	\$61,320.65		\$70,161.30
500 <u>Other Purchased Services</u>				
580 Travel	238.54	159.04		397.58
Total Other Purchased Services	\$238.54	\$159.04		\$397.58
600 <u>Supplies</u>				
610 General Supplies	2,728.50	2,728.50		5,457.00
Total Supplies	\$2,728.50	\$2,728.50		\$5,457.00
800 <u>Other Objects</u>				
810 Dues and Fees	300.00	300.00		600.00
Total Other Objects	\$300.00	\$300.00		\$600.00
Total 2119 Supervision of Student Services – All Other Supervision	\$171,930.58	\$312,715.97		\$484,646.55

General Fund (10)

2120 Guidance Services	Elementary	Secondary	Federal	Total
100 <u>Personnel Services – Salaries</u>				
100 Personnel Services – Salaries	964,673.22	1,628,990.04	70,075.40	2,663,738.66
Total Personnel Services – Salaries	\$964,673.22	\$1,628,990.04	\$70,075.40	\$2,663,738.66
200 <u>Personnel Services – Employee Benefits</u>				
210 Group Insurance – Contracted Provider	244,250.00	419,300.00	17,000.00	680,550.00
220 Social Security Contributions	72,146.59	121,955.85	5,184.59	199,287.03
230 PSERS Retirement Contributions	288,344.04	496,478.84	10,454.71	795,277.59
260 Workers' Compensation	10,786.08	18,254.41	770.77	29,811.26
Total Personnel Services – Employee Benefits	\$615,526.71	\$1,055,989.10	\$33,410.07	\$1,704,925.88
300 <u>Purchased Professional and Technical Services</u>				
330 Other Professional Services		27,610.80		27,610.80
Total Purchased Professional and Technical Services		\$27,610.80		\$27,610.80
600 <u>Supplies</u>				
610 General Supplies		3,087.98		3,087.98
Total Supplies		\$3,087.98		\$3,087.98
Total 2120 Guidance Services	\$1,580,199.93	\$2,715,677.92	\$103,485.47	\$4,399,363.32

LEA : 114067002 Reading SD

Printed 1/24/2019 10:59:43 AM

REVISED SUBMISSION

General Fund (10)

2130 Attendance Services

Elementary Secondary Federal Total

100 <u>Personnel Services – Salaries</u>				
100 Personnel Services – Salaries				360,145.55
Total Personnel Services – Salaries				\$360,145.55
200 <u>Personnel Services – Employee Benefits</u>				
210 Group Insurance – Contracted Provider				100,700.00
220 Social Security Contributions				27,188.57
230 PSERS Retirement Contributions				105,696.26
260 Workers' Compensation				3,961.55
Total Personnel Services – Employee Benefits				\$237,546.38
500 <u>Other Purchased Services</u>				
580 Travel				2,455.04
Total Other Purchased Services				\$2,455.04
Total 2130 Attendance Services				\$600,146.97

LEA : 114067002 Reading SD

Printed 1/24/2019 10:59:43 AM

REVISED SUBMISSION

General Fund (10)				
2140 Psychological Services	Elementary	Secondary	Federal	Total
100 Personnel Services – Salaries				
100 Personnel Services – Salaries	34,302.51	(10,708.54)	720,298.30	743,892.27
Total Personnel Services – Salaries	\$34,302.51	(\$10,708.54)	\$720,298.30	\$743,892.27
200 Personnel Services – Employee Benefits				
210 Group Insurance – Contracted Provider	17,000.00		157,900.00	174,900.00
220 Social Security Contributions	2,512.55	(819.19)	54,404.29	56,097.65
230 PSERS Retirement Contributions	91,110.59	24,724.55	107,548.10	223,383.24
260 Workers' Compensation	584.64	5.37	7,923.75	8,513.76
Total Personnel Services – Employee Benefits	\$111,207.78	\$23,910.73	\$327,776.14	\$462,894.65
300 Purchased Professional and Technical Services				
330 Other Professional Services	6,250.00	6,250.00		12,500.00
Total Purchased Professional and Technical Services	\$6,250.00	\$6,250.00		\$12,500.00
500 Other Purchased Services				
580 Travel	105.93	105.94		211.87
Total Other Purchased Services	\$105.93	\$105.94		\$211.87
600 Supplies				
610 General Supplies	15,139.03	15,139.03		30,278.06
Total Supplies	\$15,139.03	\$15,139.03		\$30,278.06
Total 2140 Psychological Services	\$167,005.25	\$34,697.16	\$1,048,074.44	\$1,249,776.85

LEA : 114067002 Reading SD

Printed 1/24/2019 10:59:43 AM

REVISED SUBMISSION

General Fund (10)

2160 Social Work Services	<u>Elementary</u>	<u>Secondary</u>	<u>Federal</u>	<u>Total</u>
100 <u>Personnel Services – Salaries</u>				
100 Personnel Services – Salaries				155,415.14
Total Personnel Services – Salaries				\$155,415.14
200 <u>Personnel Services – Employee Benefits</u>				
210 Group Insurance – Contracted Provider				45,800.00
220 Social Security Contributions				11,507.88
230 PSERS Retirement Contributions				46,609.66
260 Workers' Compensation				510.38
Total Personnel Services – Employee Benefits				\$104,427.92
500 <u>Other Purchased Services</u>				
580 Travel				75.00
Total Other Purchased Services				\$75.00
600 <u>Supplies</u>				
640 Books and Periodicals				2,232.00
Total Supplies				\$2,232.00
Total 2160 Social Work Services				\$262,150.06

LEA : 114067002 Reading SD

Printed 1/24/2019 10:59:43 AM

REVISED SUBMISSION

General Fund (10)

2170 Student Accounting Services	<u>Elementary</u>	<u>Secondary</u>	<u>Federal</u>	<u>Total</u>
100 <u>Personnel Services – Salaries</u>				
100 Personnel Services – Salaries				246,692.70
Total Personnel Services – Salaries				\$246,692.70
200 <u>Personnel Services – Employee Benefits</u>				
210 Group Insurance – Contracted Provider				73,700.00
220 Social Security Contributions				18,415.74
230 PSERS Retirement Contributions				71,180.72
260 Workers' Compensation				2,693.46
Total Personnel Services – Employee Benefits				\$165,989.92
300 <u>Purchased Professional and Technical Services</u>				
324 Professional Educational Services – Employee Training and Development Services				3,815.00
Total Purchased Professional and Technical Services				\$3,815.00
500 <u>Other Purchased Services</u>				
550 Printing and Binding				693.00
580 Travel				512.00
Total Other Purchased Services				\$1,205.00
Total 2170 Student Accounting Services				\$417,702.62

LEA : 114067002 Reading SD

Printed 1/24/2019 10:59:43 AM

REVISED SUBMISSION

General Fund (10)				
2190 Other Student Services	<u>Elementary</u>	<u>Secondary</u>	<u>Federal</u>	<u>Total</u>
100 <u>Personnel Services – Salaries</u>				
100 Personnel Services – Salaries			75,571.05	75,571.05
Total Personnel Services – Salaries			\$75,571.05	\$75,571.05
200 <u>Personnel Services – Employee Benefits</u>				
220 Social Security Contributions			5,778.70	5,778.70
230 PSERS Retirement Contributions		11,187.97	11,267.02	22,454.99
260 Workers’ Compensation			831.97	831.97
Total Personnel Services – Employee Benefits		\$11,187.97	\$17,877.69	\$29,065.66
300 <u>Purchased Professional and Technical Services</u>				
323 Professional Educational Services – Other Educational Agencies			28,813.66	28,813.66
Total Purchased Professional and Technical Services			\$28,813.66	\$28,813.66
Total 2190 Other Student Services		\$11,187.97	\$122,262.40	\$133,450.37

LEA : 114067002 Reading SD

Printed 1/24/2019 10:59:43 AM

REVISED SUBMISSION

General Fund (10)				
2200 Support Services – Instructional Staff	<u>Elementary</u>	<u>Secondary</u>	<u>Federal</u>	<u>Total</u>
100 <u>Personnel Services – Salaries</u>				
100 Personnel Services – Salaries	1,099,181.05	609,656.36	370,165.08	2,079,002.49
Total Personnel Services – Salaries	\$1,099,181.05	\$609,656.36	\$370,165.08	\$2,079,002.49
200 <u>Personnel Services – Employee Benefits</u>				
210 Group Insurance – Contracted Provider	266,600.00	131,400.00	51,000.00	449,000.00
220 Social Security Contributions	82,805.07	46,056.29	28,086.38	156,947.74
230 PSERS Retirement Contributions	353,613.99	209,190.17	55,312.61	618,116.77
240 Tuition Reimbursement	87,824.50	114,420.00		202,244.50
260 Workers' Compensation	12,369.22	6,814.11	4,071.48	23,254.81
Total Personnel Services – Employee Benefits	\$803,212.78	\$507,880.57	\$138,470.47	\$1,449,563.82
300 <u>Purchased Professional and Technical Services</u>				
322 Professional Educational Services – lus	91,912.41	91,912.41	142,281.76	326,106.58
324 Professional Educational Services – Employee Training and Development Services		1,000.00	251,076.35	252,076.35
329 Professional Educational Services – Other	3,899.91	822.73		4,722.64
330 Other Professional Services			17,349.73	17,349.73
Total Purchased Professional and Technical Services	\$95,812.32	\$93,735.14	\$410,707.84	\$600,255.30
400 <u>Purchased Property Services</u>				
430 Repairs and Maintenance Services	1,323.27	250.00		1,573.27
Total Purchased Property Services	\$1,323.27	\$250.00		\$1,573.27
500 <u>Other Purchased Services</u>				
580 Travel			24,779.76	24,779.76
Total Other Purchased Services			\$24,779.76	\$24,779.76
600 <u>Supplies</u>				
610 General Supplies	49,592.98	25,698.34	53,740.03	129,031.35
640 Books and Periodicals	23,909.78	20,749.00	185,967.20	230,625.98
Total Supplies	\$73,502.76	\$46,447.34	\$239,707.23	\$359,657.33
800 <u>Other Objects</u>				
810 Dues and Fees	1,085.00			1,085.00
Total Other Objects	\$1,085.00			\$1,085.00
Total 2200 Support Services – Instructional Staff	\$2,074,117.18	\$1,257,969.41	\$1,183,830.38	\$4,515,916.97

LEA : 114067002 Reading SD

Printed 1/24/2019 10:59:43 AM

REVISED SUBMISSION

General Fund (10)

2210 Supervision of Educational Media Services

	<u>Elementary</u>	<u>Secondary</u>	<u>Federal</u>	<u>Total</u>
600 <u>Supplies</u>				
610 General Supplies	3,557.12			3,557.12
Total Supplies	\$3,557.12			\$3,557.12
Total 2210 Supervision of Educational Media Services	\$3,557.12			\$3,557.12

General Fund (10)

2219 Supervision of Educational Media Services – All Other Supervision

	<u>Elementary</u>	<u>Secondary</u>	<u>Federal</u>	<u>Total</u>
600 <u>Supplies</u>				
610 General Supplies	3,557.12			3,557.12
Total Supplies	\$3,557.12			\$3,557.12
Total 2219 Supervision of Educational Media Services – All Other Supervision	\$3,557.12			\$3,557.12

LEA : 114067002 Reading SD

Printed 1/24/2019 10:59:43 AM

REVISED SUBMISSION

General Fund (10)

2220 Technology Support Services

	Elementary	Secondary	Federal	Total
100 Personnel Services – Salaries				
100 Personnel Services – Salaries		42,239.92		42,239.92
Total Personnel Services – Salaries		\$42,239.92		\$42,239.92
200 Personnel Services – Employee Benefits				
210 Group Insurance – Contracted Provider		17,450.00		17,450.00
220 Social Security Contributions		3,187.69		3,187.69
230 PSERS Retirement Contributions		12,684.50		12,684.50
260 Workers' Compensation		464.74		464.74
Total Personnel Services – Employee Benefits		\$33,786.93		\$33,786.93
400 Purchased Property Services				
430 Repairs and Maintenance Services	1,323.27	250.00		1,573.27
Total Purchased Property Services	\$1,323.27	\$250.00		\$1,573.27
600 Supplies				
610 General Supplies	21,651.04	21,493.75		43,144.79
640 Books and Periodicals			156,781.88	156,781.88
Total Supplies	\$21,651.04	\$21,493.75	\$156,781.88	\$199,926.67
Total 2220 Technology Support Services	\$22,974.31	\$97,770.60	\$156,781.88	\$277,526.79

LEA : 114067002 Reading SD

Printed 1/24/2019 10:59:43 AM

REVISED SUBMISSION

General Fund (10)

2240 Computer-Assisted Instruction Support Services

	<u>Elementary</u>	<u>Secondary</u>	<u>Federal</u>	<u>Total</u>
600 <u>Supplies</u>				
610 General Supplies	2,639.72	867.50		3,507.22
Total Supplies	\$2,639.72	\$867.50		\$3,507.22
Total 2240 Computer-Assisted Instruction Support Services	\$2,639.72	\$867.50		\$3,507.22

LEA : 114067002 Reading SD

Printed 1/24/2019 10:59:43 AM

REVIS
ED SUBMISSION

General Fund (10)				
2250 School Library Services				
	<u>Elementary</u>	<u>Secondary</u>	<u>Federal</u>	<u>Total</u>
100 <u>Personnel Services – Salaries</u>				
100 Personnel Services – Salaries	721,573.37	313,025.63		1,034,599.00
Total Personnel Services – Salaries	\$721,573.37	\$313,025.63		\$1,034,599.00
200 <u>Personnel Services – Employee Benefits</u>				
210 Group Insurance – Contracted Provider	170,200.00	72,500.00		242,700.00
220 Social Security Contributions	54,269.44	23,583.35		77,852.79
230 PSERS Retirement Contributions	216,247.99	93,193.16		309,441.15
260 Workers' Compensation	8,215.56	3,550.97		11,766.53
Total Personnel Services – Employee Benefits	\$448,932.99	\$192,827.48		\$641,760.47
600 <u>Supplies</u>				
610 General Supplies		2,810.87		2,810.87
640 Books and Periodicals	10,367.85	7,207.08		17,574.93
Total Supplies	\$10,367.85	\$10,017.95		\$20,385.80
Total 2250 School Library Services	\$1,180,874.21	\$515,871.06		\$1,696,745.27

LEA : 114067002 Reading SD

Printed 1/24/2019 10:59:43 AM

REVISED SUBMISSION

General Fund (10)				
2260 Instruction and Curriculum Development Services	Elementary	Secondary	Federal	Total
100 Personnel Services – Salaries				
100 Personnel Services – Salaries	361,455.68	239,118.81	4,907.25	605,481.74
Total Personnel Services – Salaries	\$361,455.68	\$239,118.81	\$4,907.25	\$605,481.74
200 Personnel Services – Employee Benefits				
210 Group Insurance – Contracted Provider	96,400.00	41,450.00		137,850.00
220 Social Security Contributions	27,299.81	18,116.78	375.42	45,792.01
230 PSERS Retirement Contributions	106,611.21	71,943.79	716.02	179,271.02
260 Workers' Compensation	3,975.98	2,630.40	53.99	6,660.37
Total Personnel Services – Employee Benefits	\$234,287.00	\$134,140.97	\$1,145.43	\$369,573.40
300 Purchased Professional and Technical Services				
322 Professional Educational Services – Ius	91,912.41	91,912.41		183,824.82
329 Professional Educational Services – Other	3,899.91	822.73		4,722.64
Total Purchased Professional and Technical Services	\$95,812.32	\$92,735.14		\$188,547.46
600 Supplies				
610 General Supplies	21,745.10	526.22		22,271.32
Total Supplies	\$21,745.10	\$526.22		\$22,271.32
Total 2260 Instruction and Curriculum Development Services	\$713,300.10	\$466,521.14	\$6,052.68	\$1,185,873.92

LEA : 114067002 Reading SD

Printed 1/24/2019 10:59:43 AM

REVISED SUBMISSION

General Fund (10)				
2270 Instructional Staff Professional Development Services	<u>Elementary</u>	<u>Secondary</u>	<u>Federal</u>	<u>Total</u>
100 <u>Personnel Services – Salaries</u>				
100 Personnel Services – Salaries	16,152.00	15,272.00	365,257.83	396,681.83
Total Personnel Services – Salaries	\$16,152.00	\$15,272.00	\$365,257.83	\$396,681.83
200 <u>Personnel Services – Employee Benefits</u>				
210 Group Insurance – Contracted Provider			51,000.00	51,000.00
220 Social Security Contributions	1,235.82	1,168.47	27,710.96	30,115.25
230 PSERS Retirement Contributions	30,754.79	31,368.72	54,596.59	116,720.10
240 Tuition Reimbursement	87,824.50	114,420.00		202,244.50
260 Workers' Compensation	177.68	168.00	4,017.49	4,363.17
Total Personnel Services – Employee Benefits	\$119,992.79	\$147,125.19	\$137,325.04	\$404,443.02
300 <u>Purchased Professional and Technical Services</u>				
322 Professional Educational Services – lus			142,281.76	142,281.76
324 Professional Educational Services – Employee Training and Development Services		1,000.00	251,076.35	252,076.35
330 Other Professional Services			1,600.00	1,600.00
Total Purchased Professional and Technical Services		\$1,000.00	\$394,958.11	\$395,958.11
500 <u>Other Purchased Services</u>				
580 Travel			24,779.76	24,779.76
Total Other Purchased Services			\$24,779.76	\$24,779.76
600 <u>Supplies</u>				
610 General Supplies			53,740.03	53,740.03
640 Books and Periodicals	13,541.93	13,541.92	29,185.32	56,269.17
Total Supplies	\$13,541.93	\$13,541.92	\$82,925.35	\$110,009.20
800 <u>Other Objects</u>				
810 Dues and Fees	1,085.00			1,085.00
Total Other Objects	\$1,085.00			\$1,085.00
Total 2270 Instructional Staff Professional Development Services	\$150,771.72	\$176,939.11	\$1,005,246.09	\$1,332,956.92

LEA : 114067002 Reading SD

Printed 1/24/2019 10:59:43 AM

REVISED SUBMISSION

General Fund (10)

2280 Nonpublic Support Services

300 Purchased Professional and Technical Services

	<u>Elementary</u>	<u>Secondary</u>	<u>Federal</u>	<u>Total</u>
330 Other Professional Services			15,749.73	15,749.73
Total Purchased Professional and Technical Services			\$15,749.73	\$15,749.73
Total 2280 Nonpublic Support Services			\$15,749.73	\$15,749.73

LEA : 114067002 Reading SD

Printed 1/24/2019 10:59:43 AM

REVISED SUBMISSION

General Fund (10)				
2300 Support Services – Administration	Elementary	Secondary	Federal	Total
100 <u>Personnel Services – Salaries</u>				
100 Personnel Services – Salaries	2,890,502.03	2,525,709.97		6,226,076.37
Total Personnel Services – Salaries	\$2,890,502.03	\$2,525,709.97		\$6,226,076.37
200 <u>Personnel Services – Employee Benefits</u>				
210 Group Insurance – Contracted Provider	786,475.00	689,650.00		1,653,187.96
220 Social Security Contributions	224,810.49	197,637.42		479,100.42
230 PSERS Retirement Contributions	882,786.68	767,130.73		1,890,455.73
250 Unemployment Compensation				75,599.01
260 Workers' Compensation	46,417.79	40,714.95		96,351.81
280 Other Post-Employment Benefits (OPEB)				6,689,199.60
291 Other Retirement Plans				27,720.38
299 All Other Employee Benefits	6,098.84	5,408.40		4,378.90
Total Personnel Services – Employee Benefits	\$1,946,588.80	\$1,700,541.50		\$10,915,993.81
300 <u>Purchased Professional and Technical Services</u>				
330 Other Professional Services				1,011,816.18
Total Purchased Professional and Technical Services				\$1,011,816.18
400 <u>Purchased Property Services</u>				
430 Repairs and Maintenance Services		1,125.00		1,125.00
440 Rentals	113,545.49	113,545.49		227,090.98
Total Purchased Property Services	\$113,545.49	\$114,670.49		\$228,215.98
500 <u>Other Purchased Services</u>				
520 Insurance – General				121,097.00
530 Communications	55,270.66	69,763.78		125,034.44
549 Other Advertising/Public Relations				196.10
550 Printing and Binding		6,486.00		6,630.00
580 Travel	72.76	126.69		27,003.70
599 Other Miscellaneous Purchased Services		596.00		596.00
Total Other Purchased Services	\$55,343.42	\$76,972.47		\$280,557.24
600 <u>Supplies</u>				
610 General Supplies	9,773.42	9,440.23		78,021.07
630 Food				21,525.27
640 Books and Periodicals	598.00			942.45
Total Supplies	\$10,371.42	\$9,440.23		\$100,488.79
800 <u>Other Objects</u>				
810 Dues and Fees	115.00	340.00		46,746.11
890 Miscellaneous Expenditures				3,624.64
Total Other Objects	\$115.00	\$340.00		\$50,370.75
Total 2300 Support Services – Administration	\$5,016,466.16	\$4,427,674.66		\$18,813,519.12

LEA : 114067002 Reading SD

Printed 1/24/2019 10:59:43 AM

REVISED SUBMISSION

General Fund (10)				
2310 Board Services				
	<u>Elementary</u>	<u>Secondary</u>	<u>Federal</u>	<u>Total</u>
100 <u>Personnel Services – Salaries</u>				
100 Personnel Services – Salaries				12,500.00
Total Personnel Services – Salaries				\$12,500.00
200 <u>Personnel Services – Employee Benefits</u>				
220 Social Security Contributions				956.30
230 PSERS Retirement Contributions				3,753.80
260 Workers’ Compensation				137.50
Total Personnel Services – Employee Benefits				\$4,847.60
300 <u>Purchased Professional and Technical Services</u>				
330 Other Professional Services				161,615.82
Total Purchased Professional and Technical Services				\$161,615.82
500 <u>Other Purchased Services</u>				
520 Insurance – General				120,781.00
549 Other Advertising/Public Relations				196.10
550 Printing and Binding				144.00
580 Travel				12,269.44
Total Other Purchased Services				\$133,390.54
600 <u>Supplies</u>				
610 General Supplies				9,405.48
630 Food				830.89
Total Supplies				\$10,236.37
800 <u>Other Objects</u>				
810 Dues and Fees				35,945.79
890 Miscellaneous Expenditures				1,363.69
Total Other Objects				\$37,309.48
Total 2310 Board Services				\$359,899.81

LEA : 114067002 Reading SD

Printed 1/24/2019 10:59:43 AM

REVISED SUBMISSION

General Fund (10)

2330 Tax Assessment and Collection Services	<u>Elementary</u>	<u>Secondary</u>	<u>Federal</u>	<u>Total</u>
100 <u>Personnel Services – Salaries</u>				
100 Personnel Services – Salaries				83,432.75
Total Personnel Services – Salaries				\$83,432.75
200 <u>Personnel Services – Employee Benefits</u>				
210 Group Insurance – Contracted Provider				34,450.00
220 Social Security Contributions				6,191.85
230 PSERS Retirement Contributions				23,688.60
260 Workers' Compensation				917.68
Total Personnel Services – Employee Benefits				\$65,248.13
500 <u>Other Purchased Services</u>				
520 Insurance – General				316.00
Total Other Purchased Services				\$316.00
600 <u>Supplies</u>				
610 General Supplies				41,724.87
Total Supplies				\$41,724.87
Total 2330 Tax Assessment and Collection Services				\$190,721.75

LEA : 114067002 Reading SD

Printed 1/24/2019 10:59:43 AM

REVISED SUBMISSION

General Fund (10)				
2340 Staff Relations and Negotiations Services	<u>Elementary</u>	<u>Secondary</u>	<u>Federal</u>	<u>Total</u>
100 <u>Personnel Services – Salaries</u>				
100 Personnel Services – Salaries				5,465.80
Total Personnel Services – Salaries				\$5,465.80
200 <u>Personnel Services – Employee Benefits</u>				
220 Social Security Contributions				413.92
230 PSERS Retirement Contributions				1,409.56
250 Unemployment Compensation				75,599.01
260 Workers' Compensation				60.15
280 Other Post-Employment Benefits (OPEB)				6,689,199.60
291 Other Retirement Plans				18,100.00
299 All Other Employee Benefits				1,026.00
Total Personnel Services – Employee Benefits				\$6,785,808.24
300 <u>Purchased Professional and Technical Services</u>				
330 Other Professional Services				(1,621.00)
Total Purchased Professional and Technical Services				(\$1,621.00)
Total 2340 Staff Relations and Negotiations Services				\$6,789,653.04

LEA : 114067002 Reading SD

Printed 1/24/2019 10:59:43 AM

REVISED SUBMISSION

General Fund (10)

2350 Legal and Accounting Services	<u>Elementary</u>	<u>Secondary</u>	<u>Federal</u>	<u>Total</u>
300 <u>Purchased Professional and Technical Services</u>				
330 Other Professional Services				831,205.23
Total Purchased Professional and Technical Services				\$831,205.23
Total 2350 Legal and Accounting Services				\$831,205.23

LEA : 114067002 Reading SD

Printed 1/24/2019 10:59:43 AM

REVISED SUBMISSION

General Fund (10)				
2360 Office of the Superintendent / Executive Director Services	<u>Elementary</u>	<u>Secondary</u>	<u>Federal</u>	<u>Total</u>
100 <u>Personnel Services – Salaries</u>				
100 Personnel Services – Salaries				476,845.95
Total Personnel Services – Salaries				\$476,845.95
200 <u>Personnel Services – Employee Benefits</u>				
210 Group Insurance – Contracted Provider				59,212.96
220 Social Security Contributions				31,572.44
230 PSERS Retirement Contributions				150,689.08
260 Workers' Compensation				5,556.10
291 Other Retirement Plans				9,620.38
299 All Other Employee Benefits				(8,154.34)
Total Personnel Services – Employee Benefits				\$248,496.62
300 <u>Purchased Professional and Technical Services</u>				
330 Other Professional Services				20,616.13
Total Purchased Professional and Technical Services				\$20,616.13
500 <u>Other Purchased Services</u>				
530 Communications	55,270.66	55,270.66		110,541.32
580 Travel				14,402.53
Total Other Purchased Services	\$55,270.66	\$55,270.66		\$124,943.85
600 <u>Supplies</u>				
610 General Supplies				6,521.07
630 Food				20,694.38
640 Books and Periodicals				344.45
Total Supplies				\$27,559.90
800 <u>Other Objects</u>				
810 Dues and Fees				10,345.32
890 Miscellaneous Expenditures				2,260.95
Total Other Objects				\$12,606.27
Total 2360 Office of the Superintendent / Executive Director Services	\$55,270.66	\$55,270.66		\$911,068.72

LEA : 114067002 Reading SD

Printed 1/24/2019 10:59:43 AM

REVISED SUBMISSION

General Fund (10)				
2370 Community Relations Services	<u>Elementary</u>	<u>Secondary</u>	<u>Federal</u>	<u>Total</u>
600 <u>Supplies</u>				
610 General Supplies				1,156.00
Total Supplies				\$1,156.00
Total 2370 Community Relations Services				\$1,156.00

LEA : 114067002 Reading SD

Printed 1/24/2019 10:59:43 AM

REVISED SUBMISSION

General Fund (10)				
2380 Office of the Principal Services	Elementary	Secondary	Federal	Total
100 <u>Personnel Services – Salaries</u>				
100 Personnel Services – Salaries	2,890,502.03	2,525,709.97		5,416,212.00
Total Personnel Services – Salaries	\$2,890,502.03	\$2,525,709.97		\$5,416,212.00
200 <u>Personnel Services – Employee Benefits</u>				
210 Group Insurance – Contracted Provider	786,475.00	689,650.00		1,476,125.00
220 Social Security Contributions	224,810.49	197,637.42		422,447.91
230 PSERS Retirement Contributions	882,786.68	767,130.73		1,649,917.41
260 Workers' Compensation	46,417.79	40,714.95		87,132.74
299 All Other Employee Benefits	6,098.84	5,408.40		11,507.24
Total Personnel Services – Employee Benefits	\$1,946,588.80	\$1,700,541.50		\$3,647,130.30
400 <u>Purchased Property Services</u>				
430 Repairs and Maintenance Services		1,125.00		1,125.00
440 Rentals	113,545.49	113,545.49		227,090.98
Total Purchased Property Services	\$113,545.49	\$114,670.49		\$228,215.98
500 <u>Other Purchased Services</u>				
530 Communications		14,493.12		14,493.12
550 Printing and Binding		6,486.00		6,486.00
580 Travel	72.76	126.69		199.45
599 Other Miscellaneous Purchased Services		596.00		596.00
Total Other Purchased Services	\$72.76	\$21,701.81		\$21,774.57
600 <u>Supplies</u>				
610 General Supplies	9,773.42	9,440.23		19,213.65
640 Books and Periodicals	598.00			598.00
Total Supplies	\$10,371.42	\$9,440.23		\$19,811.65
800 <u>Other Objects</u>				
810 Dues and Fees	115.00	340.00		455.00
Total Other Objects	\$115.00	\$340.00		\$455.00
Total 2380 Office of the Principal Services	\$4,961,195.50	\$4,372,404.00		\$9,333,599.50

LEA : 114067002 Reading SD

Printed 1/24/2019 10:59:43 AM

REVISED SUBMISSION

General Fund (10)

2390 Other Administration Services	<u>Elementary</u>	<u>Secondary</u>	<u>Federal</u>	<u>Total</u>
100 <u>Personnel Services – Salaries</u>				
100 Personnel Services – Salaries				231,619.87
Total Personnel Services – Salaries				\$231,619.87
200 <u>Personnel Services – Employee Benefits</u>				
210 Group Insurance – Contracted Provider				83,400.00
220 Social Security Contributions				17,518.00
230 PSERS Retirement Contributions				60,997.28
260 Workers' Compensation				2,547.64
Total Personnel Services – Employee Benefits				\$164,462.92
500 <u>Other Purchased Services</u>				
580 Travel				132.28
Total Other Purchased Services				\$132.28
Total 2390 Other Administration Services				\$396,215.07

LEA : 114067002 Reading SD

Printed 1/24/2019 10:59:43 AM

REVISED SUBMISSION

General Fund (10)				
2400 Support Services – Pupil Health	<u>Elementary</u>	<u>Secondary</u>	<u>Federal</u>	<u>Total</u>
100 <u>Personnel Services – Salaries</u>				
100 Personnel Services – Salaries				1,618,960.68
Total Personnel Services – Salaries				\$1,618,960.68
200 <u>Personnel Services – Employee Benefits</u>				
210 Group Insurance – Contracted Provider				408,450.00
220 Social Security Contributions				121,249.10
230 PSERS Retirement Contributions				483,388.97
260 Workers' Compensation				18,197.73
Total Personnel Services – Employee Benefits				\$1,031,285.80
300 <u>Purchased Professional and Technical Services</u>				
324 Professional Educational Services – Employee Training and Development Services				2,017.54
330 Other Professional Services			743,299.73	745,819.99
Total Purchased Professional and Technical Services			\$743,299.73	\$747,837.53
500 <u>Other Purchased Services</u>				
550 Printing and Binding				672.35
580 Travel				1,624.74
Total Other Purchased Services				\$2,297.09
600 <u>Supplies</u>				
610 General Supplies				24,626.87
640 Books and Periodicals				412.00
Total Supplies				\$25,038.87
Total 2400 Support Services – Pupil Health			\$743,299.73	\$3,425,419.97

LEA : 114067002 Reading SD

Printed 1/24/2019 10:59:43 AM

REVISED SUBMISSION

General Fund (10)

2410 Supervision of Health Services	<u>Elementary</u>	<u>Secondary</u>	<u>Federal</u>	<u>Total</u>
100 <u>Personnel Services – Salaries</u>				
100 Personnel Services – Salaries				104,067.44
Total Personnel Services – Salaries				\$104,067.44
200 <u>Personnel Services – Employee Benefits</u>				
210 Group Insurance – Contracted Provider				17,450.00
220 Social Security Contributions				7,884.38
230 PSERS Retirement Contributions				30,837.04
260 Workers' Compensation				1,144.62
Total Personnel Services – Employee Benefits				\$57,316.04
500 <u>Other Purchased Services</u>				
550 Printing and Binding				79.59
Total Other Purchased Services				\$79.59
600 <u>Supplies</u>				
610 General Supplies				670.87
Total Supplies				\$670.87
Total 2410 Supervision of Health Services				\$162,133.94

LEA : 114067002 Reading SD

Printed 1/24/2019 10:59:43 AM

REVISED SUBMISSION

General Fund (10)

2411 Supervision of Health Services – Head of Component	<u>Elementary</u>	<u>Secondary</u>	<u>Federal</u>	<u>Total</u>
100 <u>Personnel Services – Salaries</u>				
100 Personnel Services – Salaries				104,067.44
Total Personnel Services – Salaries				\$104,067.44
200 <u>Personnel Services – Employee Benefits</u>				
210 Group Insurance – Contracted Provider				17,450.00
220 Social Security Contributions				7,884.38
230 PSERS Retirement Contributions				30,837.04
260 Workers' Compensation				1,144.62
Total Personnel Services – Employee Benefits				\$57,316.04
Total 2411 Supervision of Health Services – Head of Component				\$161,383.48

LEA : 114067002 Reading SD

Printed 1/24/2019 10:59:43 AM

REVISED SUBMISSION

General Fund (10)

2419 Supervision of Health Services – All Other Supervision	<u>Elementary</u>	<u>Secondary</u>	<u>Federal</u>	<u>Total</u>
500 <u>Other Purchased Services</u>				
550 Printing and Binding				79.59
Total Other Purchased Services				\$79.59
600 <u>Supplies</u>				
610 General Supplies				670.87
Total Supplies				\$670.87
Total 2419 Supervision of Health Services – All Other Supervision				\$750.46

Printed 1/24/2019 10:59:43 AM

Page 92

LEA : 114067002 Reading SD

Printed 1/24/2019 10:59:43 AM

REVISED SUBMISSION

General Fund (10)				
2430 Dental Services	<u>Elementary</u>	<u>Secondary</u>	<u>Federal</u>	<u>Total</u>
100 <u>Personnel Services – Salaries</u>				
100 Personnel Services – Salaries				180,075.49
Total Personnel Services – Salaries				\$180,075.49
200 <u>Personnel Services – Employee Benefits</u>				
210 Group Insurance – Contracted Provider				34,000.00
220 Social Security Contributions				13,626.60
230 PSERS Retirement Contributions				53,351.72
260 Workers' Compensation				1,980.59
Total Personnel Services – Employee Benefits				\$102,958.91
300 <u>Purchased Professional and Technical Services</u>				
324 Professional Educational Services – Employee Training and Development Services				114.04
Total Purchased Professional and Technical Services				\$114.04
500 <u>Other Purchased Services</u>				
550 Printing and Binding				109.37
580 Travel				42.80
Total Other Purchased Services				\$152.17
600 <u>Supplies</u>				
610 General Supplies				8,182.60
Total Supplies				\$8,182.60
Total 2430 Dental Services				\$291,483.21

LEA : 114067002 Reading SD

Printed 1/24/2019 10:59:43 AM

REVISED SUBMISSION

General Fund (10)

2440 Nursing Services

Elementary Secondary Federal Total

100 <u>Personnel Services – Salaries</u>				
100 Personnel Services – Salaries				1,334,817.75
Total Personnel Services – Salaries				\$1,334,817.75
200 <u>Personnel Services – Employee Benefits</u>				
210 Group Insurance – Contracted Provider				357,000.00
220 Social Security Contributions				99,738.12
230 PSERS Retirement Contributions				399,200.21
260 Workers' Compensation				15,072.52
Total Personnel Services – Employee Benefits				\$871,010.85
300 <u>Purchased Professional and Technical Services</u>				
324 Professional Educational Services – Employee Training and Development Services				1,903.50
330 Other Professional Services			165,168.43	167,688.69
Total Purchased Professional and Technical Services			\$165,168.43	\$169,592.19
500 <u>Other Purchased Services</u>				
550 Printing and Binding				483.39
580 Travel				1,581.94
Total Other Purchased Services				\$2,065.33
600 <u>Supplies</u>				
610 General Supplies				15,773.40
640 Books and Periodicals				412.00
Total Supplies				\$16,185.40
Total 2440 Nursing Services			\$165,168.43	\$2,393,671.52

LEA : 114067002 Reading SD

Printed 1/24/2019 10:59:43 AM

REVISED SUBMISSION

General Fund (10)					
2500 Support Services – Business		Elementary	Secondary	Federal	Total
100 Personnel Services – Salaries					
100 Personnel Services – Salaries					665,663.10
Total Personnel Services – Salaries					\$665,663.10
200 Personnel Services – Employee Benefits					
210 Group Insurance – Contracted Provider					211,225.00
220 Social Security Contributions					51,836.45
230 PSERS Retirement Contributions					217,348.81
250 Unemployment Compensation					6,255.00
260 Workers' Compensation					7,753.45
291 Other Retirement Plans					6,415.80
299 All Other Employee Benefits					(18,204.40)
Total Personnel Services – Employee Benefits					\$482,630.11
300 Purchased Professional and Technical Services					
310 Official / Administrative Services					46,161.68
324 Professional Educational Services – Employee Training and Development Services					1,033.75
330 Other Professional Services					46,389.19
390 Other Purchased Professional and Technical Services					3,706.92
Total Purchased Professional and Technical Services					\$97,291.54
400 Purchased Property Services					
410 Cleaning Services					3,162.21
440 Rentals					28,695.95
Total Purchased Property Services					\$31,858.16
500 Other Purchased Services					
530 Communications					2,724.57
580 Travel					2,229.39
Total Other Purchased Services					\$4,953.96
600 Supplies					
610 General Supplies					2,666.40
630 Food					27.75
640 Books and Periodicals					332.00
Total Supplies					\$3,026.15
800 Other Objects					
810 Dues and Fees					67,229.84
890 Miscellaneous Expenditures					627.54
Total Other Objects					\$67,857.38
Total 2500 Support Services – Business					\$1,353,280.40

LEA : 114067002 Reading SD

Printed 1/24/2019 10:59:43 AM

REVISED SUBMISSION

General Fund (10)				
2510 Fiscal Services				
	Elementary	Secondary	Federal	Total
100 <u>Personnel Services – Salaries</u>				
100	Personnel Services – Salaries			573,550.19
Total Personnel Services – Salaries				\$573,550.19
200 <u>Personnel Services – Employee Benefits</u>				
210	Group Insurance – Contracted Provider			175,025.00
220	Social Security Contributions			44,345.06
230	PSERS Retirement Contributions			188,349.15
250	Unemployment Compensation			6,255.00
260	Workers' Compensation			6,655.93
291	Other Retirement Plans			6,415.80
299	All Other Employee Benefits			(13,906.71)
Total Personnel Services – Employee Benefits				\$413,139.23
300 <u>Purchased Professional and Technical Services</u>				
310	Official / Administrative Services			46,161.68
324	Professional Educational Services – Employee Training and Development Services			963.75
330	Other Professional Services			48,748.20
390	Other Purchased Professional and Technical Services			3,706.92
Total Purchased Professional and Technical Services				\$99,580.55
400 <u>Purchased Property Services</u>				
410	Cleaning Services			3,162.21
440	Rentals			3,304.00
Total Purchased Property Services				\$6,466.21
500 <u>Other Purchased Services</u>				
530	Communications			1,504.19
580	Travel			2,163.02
Total Other Purchased Services				\$3,667.21
600 <u>Supplies</u>				
610	General Supplies			8,656.19
630	Food			27.75
640	Books and Periodicals			332.00
Total Supplies				\$9,015.94
800 <u>Other Objects</u>				
810	Dues and Fees			67,130.84
890	Miscellaneous Expenditures			627.54
Total Other Objects				\$67,758.38
Total 2510 Fiscal Services				\$1,173,177.71

LEA : 114067002 Reading SD

Printed 1/24/2019 10:59:43 AM

REVISED SUBMISSION

General Fund (10)

2511 Supervision of Fiscal Services - Head of Component	<u>Elementary</u>	<u>Secondary</u>	<u>Federal</u>	<u>Total</u>
100 <u>Personnel Services – Salaries</u>				
100 Personnel Services – Salaries				172,386.07
Total Personnel Services – Salaries				\$172,386.07
200 <u>Personnel Services – Employee Benefits</u>				
210 Group Insurance – Contracted Provider				34,900.00
220 Social Security Contributions				12,544.99
230 PSERS Retirement Contributions				53,512.16
260 Workers' Compensation				1,974.78
291 Other Retirement Plans				6,415.80
Total Personnel Services – Employee Benefits				\$109,347.73
300 <u>Purchased Professional and Technical Services</u>				
324 Professional Educational Services – Employee Training and Development Services				435.00
Total Purchased Professional and Technical Services				\$435.00
500 <u>Other Purchased Services</u>				
580 Travel				1,825.60
Total Other Purchased Services				\$1,825.60
600 <u>Supplies</u>				
610 General Supplies				1,038.56
630 Food				27.75
640 Books and Periodicals				332.00
Total Supplies				\$1,398.31
800 <u>Other Objects</u>				
810 Dues and Fees				1,195.00
890 Miscellaneous Expenditures				500.00
Total Other Objects				\$1,695.00
Total 2511 Supervision of Fiscal Services - Head of Component				\$287,087.71

LEA : 114067002 Reading SD

Printed 1/24/2019 10:59:43 AM

REVISED SUBMISSION

General Fund (10)				
2514 Payroll Services	<u>Elementary</u>	<u>Secondary</u>	<u>Federal</u>	<u>Total</u>
100 <u>Personnel Services – Salaries</u>				
100 Personnel Services – Salaries				115,397.64
Total Personnel Services – Salaries				\$115,397.64
200 <u>Personnel Services – Employee Benefits</u>				
210 Group Insurance – Contracted Provider				47,450.00
220 Social Security Contributions				9,070.43
230 PSERS Retirement Contributions				35,808.94
250 Unemployment Compensation				6,255.00
260 Workers' Compensation				1,366.81
299 All Other Employee Benefits				(5,949.77)
Total Personnel Services – Employee Benefits				\$94,001.41
300 <u>Purchased Professional and Technical Services</u>				
324 Professional Educational Services – Employee Training and Development Services				138.75
330 Other Professional Services				24,603.40
Total Purchased Professional and Technical Services				\$24,742.15
Total 2514 Payroll Services				\$234,141.20

LEA : 114067002 Reading SD

Printed 1/24/2019 10:59:43 AM

REVISED SUBMISSION

General Fund (10)				
2515 Financial Accounting Services	Elementary	Secondary	Federal	Total
100 <u>Personnel Services – Salaries</u>				
100 Personnel Services – Salaries				156,187.42
Total Personnel Services – Salaries				\$156,187.42
200 <u>Personnel Services – Employee Benefits</u>				
210 Group Insurance – Contracted Provider				36,425.00
220 Social Security Contributions				12,947.06
230 PSERS Retirement Contributions				51,360.94
260 Workers' Compensation				1,889.21
299 All Other Employee Benefits				(7,956.94)
Total Personnel Services – Employee Benefits				\$94,665.27
300 <u>Purchased Professional and Technical Services</u>				
310 Official / Administrative Services				46,161.68
324 Professional Educational Services – Employee Training and Development Services				390.00
330 Other Professional Services				24,144.80
390 Other Purchased Professional and Technical Services				3,706.92
Total Purchased Professional and Technical Services				\$74,403.40
400 <u>Purchased Property Services</u>				
410 Cleaning Services				3,162.21
440 Rentals				3,304.00
Total Purchased Property Services				\$6,466.21
500 <u>Other Purchased Services</u>				
530 Communications				1,504.19
580 Travel				337.42
Total Other Purchased Services				\$1,841.61
600 <u>Supplies</u>				
610 General Supplies				5,117.63
Total Supplies				\$5,117.63
800 <u>Other Objects</u>				
810 Dues and Fees				65,230.84
890 Miscellaneous Expenditures				127.54
Total Other Objects				\$65,358.38
Total 2515 Financial Accounting Services				\$404,039.92

LEA : 114067002 Reading SD

Printed 1/24/2019 10:59:43 AM

REVISED SUBMISSION

General Fund (10)				
2517 Property Accounting Services	<u>Elementary</u>	<u>Secondary</u>	<u>Federal</u>	<u>Total</u>
600 <u>Supplies</u>				
610 General Supplies				2,500.00
Total Supplies				\$2,500.00
Total 2517 Property Accounting Services				\$2,500.00

LEA : 114067002 Reading SD

Printed 1/24/2019 10:59:43 AM

REVISED SUBMISSION

General Fund (10)

2519 Other Fiscal Services	<u>Elementary</u>	<u>Secondary</u>	<u>Federal</u>	<u>Total</u>
100 <u>Personnel Services – Salaries</u>				
100 Personnel Services – Salaries				129,579.06
Total Personnel Services – Salaries				\$129,579.06
200 <u>Personnel Services – Employee Benefits</u>				
210 Group Insurance – Contracted Provider				56,250.00
220 Social Security Contributions				9,782.58
230 PSERS Retirement Contributions				47,667.11
260 Workers' Compensation				1,425.13
Total Personnel Services – Employee Benefits				\$115,124.82
800 <u>Other Objects</u>				
810 Dues and Fees				705.00
Total Other Objects				\$705.00
Total 2519 Other Fiscal Services				\$245,408.88

LEA : 114067002 Reading SD

Printed 1/24/2019 10:59:43 AM

REVISED SUBMISSION

General Fund (10)				
2520 Purchasing Services	Elementary	Secondary	Federal	Total
100 <u>Personnel Services – Salaries</u>				
100 Personnel Services – Salaries				92,112.91
Total Personnel Services – Salaries				\$92,112.91
200 <u>Personnel Services – Employee Benefits</u>				
210 Group Insurance – Contracted Provider				36,200.00
220 Social Security Contributions				7,491.39
230 PSERS Retirement Contributions				28,999.66
260 Workers' Compensation				1,097.52
299 All Other Employee Benefits				(4,297.69)
Total Personnel Services – Employee Benefits				\$69,490.88
500 <u>Other Purchased Services</u>				
580 Travel				66.37
Total Other Purchased Services				\$66.37
600 <u>Supplies</u>				
610 General Supplies				3,440.17
Total Supplies				\$3,440.17
Total 2520 Purchasing Services				\$165,110.33

General Fund (10)

2530 Warehousing and Distributing Services	<u>Elementary</u>	<u>Secondary</u>	<u>Federal</u>	<u>Total</u>
400 <u>Purchased Property Services</u>				
440 Rentals				25,391.95
Total Purchased Property Services				\$25,391.95
500 <u>Other Purchased Services</u>				
530 Communications				1,220.38
Total Other Purchased Services				\$1,220.38
Total 2530 Warehousing and Distributing Services				\$26,612.33

LEA : 114067002 Reading SD

Printed 1/24/2019 10:59:43 AM

REVISED SUBMISSION

General Fund (10)

2590 Other Support Services – Business

Elementary

Secondary

Federal

Total

300 Purchased Professional and Technical Services

324 Professional Educational Services – Employee Training and Development Services

70.00

330 Other Professional Services

(2,359.01)

Total Purchased Professional and Technical Services

(\$2,289.01)

600 Supplies

610 General Supplies

(9,429.96)

Total Supplies

(\$9,429.96)

800 Other Objects

810 Dues and Fees

99.00

Total Other Objects

\$99.00

Total 2590 Other Support Services – Business

(\$11,619.97)

LEA : 114067002 Reading SD

Printed 1/24/2019 10:59:43 AM

REVISED SUBMISSION

General Fund (10)				
2600 Operation and Maintenance of Plant Services	Elementary	Secondary	Federal	Total
100 <u>Personnel Services – Salaries</u>				
100 Personnel Services – Salaries				7,383,690.53
Total Personnel Services – Salaries				\$7,383,690.53
200 <u>Personnel Services – Employee Benefits</u>				
210 Group Insurance – Contracted Provider				2,961,389.22
220 Social Security Contributions				573,179.95
230 PSERS Retirement Contributions				2,140,572.71
250 Unemployment Compensation				3,697.40
260 Workers' Compensation				104,611.26
299 All Other Employee Benefits				(37,221.45)
Total Personnel Services – Employee Benefits				\$5,746,229.09
300 <u>Purchased Professional and Technical Services</u>				
324 Professional Educational Services – Employee Training and Development Services				830.00
330 Other Professional Services				468,299.76
340 Technical Services				18,358.20
390 Other Purchased Professional and Technical Services				395.00
Total Purchased Professional and Technical Services				\$487,882.96
400 <u>Purchased Property Services</u>				
410 Cleaning Services				99,135.46
420 Utility Services				2,356,991.55
430 Repairs and Maintenance Services				801,119.35
440 Rentals				293,994.44
460 Extermination Services				19,169.00
490 Other Purchased Property Services				2,995.44
Total Purchased Property Services				\$3,573,405.24
500 <u>Other Purchased Services</u>				
521 Fire Insurance				27,787.00
522 Automotive Liability Insurance				77,708.00
529 Other Insurance				3,091.00
530 Communications				159,341.76
549 Other Advertising/Public Relations				6,250.50
580 Travel				1,059.25
Total Other Purchased Services				\$275,237.51
600 <u>Supplies</u>				
610 General Supplies	808,732.50	803,019.04		1,611,751.54
620 Energy				850,633.42
Total Supplies		\$808,732.50	\$803,019.04	\$2,462,384.96
800 <u>Other Objects</u>				
810 Dues and Fees				337.21
890 Miscellaneous Expenditures				520,832.23
Total Other Objects				\$521,169.44
Total 2600 Operation and Maintenance of Plant Services	\$808,732.50	\$803,019.04		\$20,449,999.73

LEA : 114067002 Reading SD

Printed 1/24/2019 10:59:43 AM

REVISED SUBMISSION

General Fund (10)

2610 Supervision of Operation and Maintenance of Plant Services	<u>Elementary</u>	<u>Secondary</u>	<u>Federal</u>	<u>Total</u>
100 <u>Personnel Services – Salaries</u>				
100 Personnel Services – Salaries				356,986.57
Total Personnel Services – Salaries				\$356,986.57
200 <u>Personnel Services – Employee Benefits</u>				
210 Group Insurance – Contracted Provider				109,900.00
220 Social Security Contributions				26,780.45
230 PSERS Retirement Contributions				102,711.50
260 Workers' Compensation				3,813.18
Total Personnel Services – Employee Benefits				\$243,205.13
800 <u>Other Objects</u>				
810 Dues and Fees				281.00
Total Other Objects				\$281.00
Total 2610 Supervision of Operation and Maintenance of Plant Services				\$600,472.70

LEA : 114067002 Reading SD

Printed 1/24/2019 10:59:43 AM

REVISED SUBMISSION

General Fund (10)

2611 Supervision of Operation and Maintenance of Plant Services – Head of Component	<u>Elementary</u>	<u>Secondary</u>	<u>Federal</u>	<u>Total</u>
100 <u>Personnel Services – Salaries</u>				
100 Personnel Services – Salaries				85,418.34
Total Personnel Services – Salaries				\$85,418.34
200 <u>Personnel Services – Employee Benefits</u>				
210 Group Insurance – Contracted Provider				17,450.00
220 Social Security Contributions				6,490.93
230 PSERS Retirement Contributions				25,450.36
260 Workers' Compensation				939.71
Total Personnel Services – Employee Benefits				\$50,331.00
800 <u>Other Objects</u>				
810 Dues and Fees				281.00
Total Other Objects				\$281.00
Total 2611 Supervision of Operation and Maintenance of Plant Services – Head of Component				\$136,030.34

General Fund (10)

2619 Supervision of Operation and Maintenance of Plant Services – All Other Supervision	<u>Elementary</u>	<u>Secondary</u>	<u>Federal</u>	<u>Total</u>
100 <u>Personnel Services – Salaries</u>				
100 Personnel Services – Salaries				271,568.23
Total Personnel Services – Salaries				\$271,568.23
200 <u>Personnel Services – Employee Benefits</u>				
210 Group Insurance – Contracted Provider				92,450.00
220 Social Security Contributions				20,289.52
230 PSERS Retirement Contributions				77,261.14
260 Workers' Compensation				2,873.47
Total Personnel Services – Employee Benefits				\$192,874.13
Total 2619 Supervision of Operation and Maintenance of Plant Services – All Other Supervision				\$464,442.36

LEA : 114067002 Reading SD

Printed 1/24/2019 10:59:43 AM

REVISED SUBMISSION

General Fund (10)				
2620 Operation of Buildings Services	Elementary	Secondary	Federal	Total
100 <u>Personnel Services – Salaries</u>				
100 Personnel Services – Salaries				6,205,123.41
Total Personnel Services – Salaries				\$6,205,123.41
200 <u>Personnel Services – Employee Benefits</u>				
210 Group Insurance – Contracted Provider				2,469,064.22
220 Social Security Contributions				477,848.21
230 PSERS Retirement Contributions				1,779,476.95
250 Unemployment Compensation				3,697.40
260 Workers' Compensation				90,964.68
299 All Other Employee Benefits				(19,973.49)
Total Personnel Services – Employee Benefits				\$4,801,077.97
300 <u>Purchased Professional and Technical Services</u>				
324 Professional Educational Services – Employee Training and Development Services				155.00
330 Other Professional Services				151,523.38
340 Technical Services				18,358.20
Total Purchased Professional and Technical Services				\$170,036.58
400 <u>Purchased Property Services</u>				
410 Cleaning Services				(66,147.47)
420 Utility Services				2,356,991.55
430 Repairs and Maintenance Services				790,330.00
440 Rentals				234,746.96
460 Extermination Services				19,169.00
490 Other Purchased Property Services				2,995.44
Total Purchased Property Services				\$3,338,085.48
500 <u>Other Purchased Services</u>				
521 Fire Insurance				27,787.00
522 Automotive Liability Insurance				77,708.00
529 Other Insurance				3,091.00
530 Communications				159,341.76
549 Other Advertising/Public Relations				6,250.50
580 Travel				337.22
Total Other Purchased Services				\$274,515.48
600 <u>Supplies</u>				
610 General Supplies	784,175.73	782,314.26		1,566,489.99
620 Energy				850,633.42
Total Supplies	\$784,175.73	\$782,314.26		\$2,417,123.41
800 <u>Other Objects</u>				
890 Miscellaneous Expenditures				520,832.23
Total Other Objects				\$520,832.23
Total 2620 Operation of Buildings Services	\$784,175.73	\$782,314.26		\$17,726,794.56

LEA : 114067002 Reading SD

Printed 1/24/2019 10:59:43 AM

REVISED SUBMISSION

General Fund (10)

2650 Vehicle Operation and Maintenance Services (Other Than Student Transportation Vehicles)	<u>Elementary</u>	<u>Secondary</u>	<u>Federal</u>	<u>Total</u>
400 <u>Purchased Property Services</u>				
440 Rentals				59,247.48
Total Purchased Property Services				\$59,247.48
Total 2650 Vehicle Operation and Maintenance Services (Other Than Student Transportation Vehicles)				\$59,247.48

LEA : 114067002 Reading SD

Printed 1/24/2019 10:59:43 AM

REVISED SUBMISSION

General Fund (10)				
2660 Safety and Security Services	Elementary	Secondary	Federal	Total
100 Personnel Services – Salaries				
100 Personnel Services – Salaries				821,580.55
Total Personnel Services – Salaries				\$821,580.55
200 Personnel Services – Employee Benefits				
210 Group Insurance – Contracted Provider				382,425.00
220 Social Security Contributions				68,551.29
230 PSERS Retirement Contributions				258,384.26
260 Workers' Compensation				9,833.40
299 All Other Employee Benefits				(17,247.96)
Total Personnel Services – Employee Benefits				\$701,945.99
300 Purchased Professional and Technical Services				
324 Professional Educational Services – Employee Training and Development Services				675.00
330 Other Professional Services				316,776.38
390 Other Purchased Professional and Technical Services				395.00
Total Purchased Professional and Technical Services				\$317,846.38
400 Purchased Property Services				
430 Repairs and Maintenance Services				10,789.35
Total Purchased Property Services				\$10,789.35
500 Other Purchased Services				
580 Travel				722.03
Total Other Purchased Services				\$722.03
600 Supplies				
610 General Supplies	24,556.77	20,704.78		45,261.55
Total Supplies	\$24,556.77	\$20,704.78		\$45,261.55
800 Other Objects				
810 Dues and Fees				56.21
Total Other Objects				\$56.21
Total 2660 Safety and Security Services	\$24,556.77	\$20,704.78		\$1,898,202.06

LEA : 114067002 Reading SD

Printed 1/24/2019 10:59:43 AM

REVISED SUBMISSION

General Fund (10)

2690 Other Operation and Maintenance of Plant Services

Elementary

Secondary

Federal

Total

400 Purchased Property Services

410 Cleaning Services

165,282.93

Total Purchased Property Services				\$165,282.93
Total 2690 Other Operation and Maintenance of Plant Services				\$165,282.93

LEA : 114067002 Reading SD

Printed 1/24/2019 10:59:43 AM

REVISED SUBMISSION

General Fund (10)

2700 Student Transportation Services	<u>Elementary</u>	<u>Secondary</u>	<u>Federal</u>	<u>Total</u>
100 <u>Personnel Services – Salaries</u>				
100 Personnel Services – Salaries				49,968.75
Total Personnel Services – Salaries				\$49,968.75
200 <u>Personnel Services – Employee Benefits</u>				
210 Group Insurance – Contracted Provider				18,750.00
220 Social Security Contributions				3,738.47
230 PSERS Retirement Contributions				14,059.92
260 Workers' Compensation				549.69
Total Personnel Services – Employee Benefits				\$37,098.08
500 <u>Other Purchased Services</u>				
513 Contracted Carriers			2,959.90	2,959.90
516 Student Transportation Services From the IU			18,674.56	5,013,964.72
Total Other Purchased Services			\$21,634.46	\$5,016,924.62
Total 2700 Student Transportation Services			\$21,634.46	\$5,103,991.45

LEA : 114067002 Reading SD

Printed 1/24/2019 10:59:43 AM

REVISED SUBMISSION

General Fund (10)

2710 Supervision of Student Transportation Services	<u>Elementary</u>	<u>Secondary</u>	<u>Federal</u>	<u>Total</u>
100 <u>Personnel Services – Salaries</u>				
100 Personnel Services – Salaries				45,978.75
Total Personnel Services – Salaries				\$45,978.75
200 <u>Personnel Services – Employee Benefits</u>				
210 Group Insurance – Contracted Provider				18,750.00
220 Social Security Contributions				3,433.24
230 PSERS Retirement Contributions				12,861.72
260 Workers' Compensation				505.80
Total Personnel Services – Employee Benefits				\$35,550.76
Total 2710 Supervision of Student Transportation Services				\$81,529.51

General Fund (10)

2719 Supervision of Student Transportation Services – All Other Supervision	<u>Elementary</u>	<u>Secondary</u>	<u>Federal</u>	<u>Total</u>
100 <u>Personnel Services – Salaries</u>				
100 Personnel Services – Salaries				45,978.75
Total Personnel Services – Salaries				\$45,978.75
200 <u>Personnel Services – Employee Benefits</u>				
210 Group Insurance – Contracted Provider				18,750.00
220 Social Security Contributions				3,433.24
230 PSERS Retirement Contributions				12,861.72
260 Workers' Compensation				505.80
Total Personnel Services – Employee Benefits				\$35,550.76
Total 2719 Supervision of Student Transportation Services – All Other Supervision				\$81,529.51

LEA : 114067002 Reading SD

Printed 1/24/2019 10:59:43 AM

REVISED SUBMISSION

General Fund (10)

2720 Vehicle Operation Services

<u>Elementary</u>	<u>Secondary</u>	<u>Federal</u>	<u>Total</u>
-------------------	------------------	----------------	--------------

500 Other Purchased Services

513 Contracted Carriers		2,959.90	2,959.90
-------------------------	--	----------	----------

516 Student Transportation Services From the IU		18,674.56	4,590,900.44
---	--	-----------	--------------

Total Other Purchased Services		\$21,634.46	\$4,593,860.34
Total 2720 Vehicle Operation Services		\$21,634.46	\$4,593,860.34

LEA : 114067002 Reading SD

Printed 1/24/2019 10:59:43 AM

REVISED SUBMISSION

General Fund (10)

2730 Monitoring Services

Elementary Secondary Federal Total

100 <u>Personnel Services – Salaries</u>				
100 Personnel Services – Salaries				3,990.00
Total Personnel Services – Salaries				\$3,990.00
200 <u>Personnel Services – Employee Benefits</u>				
220 Social Security Contributions				305.23
230 PSERS Retirement Contributions				1,198.20
260 Workers’ Compensation				43.89
Total Personnel Services – Employee Benefits				\$1,547.32
Total 2730 Monitoring Services				\$5,537.32

LEA : 114067002 Reading SD

Printed 1/24/2019 10:59:43 AM

REVISED SUBMISSION

General Fund (10)

2750 Nonpublic Transportation

Elementary

Secondary

Federal

Total

500 Other Purchased Services

516 Student Transportation Services From the IU

423,064.28

Total Other Purchased Services				\$423,064.28
Total 2750 Nonpublic Transportation				\$423,064.28

LEA : 114067002 Reading SD

Printed 1/24/2019 10:59:43 AM

REVISED SUBMISSION

General Fund (10)				
2800 Support Services – Central		<u>Elementary</u>	<u>Secondary</u>	<u>Federal</u> <u>Total</u>
100 <u>Personnel Services – Salaries</u>				
100 Personnel Services – Salaries			161,729.43	1,226,427.95
Total Personnel Services – Salaries			\$161,729.43	\$1,226,427.95
200 <u>Personnel Services – Employee Benefits</u>				
210 Group Insurance – Contracted Provider			53,425.00	348,825.00
220 Social Security Contributions			12,159.15	97,425.80
230 PSERS Retirement Contributions			23,649.97	387,068.14
260 Workers' Compensation			1,778.82	14,590.60
299 All Other Employee Benefits				(40,391.36)
Total Personnel Services – Employee Benefits			\$91,012.94	\$807,518.18
300 <u>Purchased Professional and Technical Services</u>				
310 Official / Administrative Services				15,200.44
322 Professional Educational Services – Ius				391.04
324 Professional Educational Services – Employee Training and Development Services				69,016.91
330 Other Professional Services				171,018.57
340 Technical Services				350,817.05
390 Other Purchased Professional and Technical Services				659.88
Total Purchased Professional and Technical Services				\$607,103.89
400 <u>Purchased Property Services</u>				
430 Repairs and Maintenance Services				788.00
Total Purchased Property Services				\$788.00
500 <u>Other Purchased Services</u>				
520 Insurance – General				793,664.50
530 Communications				206,719.89
549 Other Advertising/Public Relations				16,763.60
550 Printing and Binding				1,004.43
580 Travel				10,059.13
Total Other Purchased Services				\$1,028,211.55
600 <u>Supplies</u>				
610 General Supplies			1,509.34	1,647,926.71
630 Food				7,180.79
640 Books and Periodicals			348.50	597.78
Total Supplies			\$1,857.84	\$1,655,705.28
800 <u>Other Objects</u>				
810 Dues and Fees				18,472.70
890 Miscellaneous Expenditures				45.00
Total Other Objects				\$18,517.70
Total 2800 Support Services – Central			\$254,600.21	\$5,344,272.55

LEA : 114067002 Reading SD

Printed 1/24/2019 10:59:43 AM

REVISED SUBMISSION

General Fund (10)				
2810 Planning, Research, Development and Evaluation Services	<u>Elementary</u>	<u>Secondary</u>	<u>Federal</u>	<u>Total</u>
100 <u>Personnel Services – Salaries</u>				
100 Personnel Services – Salaries				95,995.89
Total Personnel Services – Salaries				\$95,995.89
200 <u>Personnel Services – Employee Benefits</u>				
210 Group Insurance – Contracted Provider				17,450.00
220 Social Security Contributions				7,281.82
230 PSERS Retirement Contributions				28,603.64
260 Workers' Compensation				1,056.01
Total Personnel Services – Employee Benefits				\$54,391.47
300 <u>Purchased Professional and Technical Services</u>				
324 Professional Educational Services – Employee Training and Development Services				61,112.91
330 Other Professional Services				595.00
340 Technical Services				17,760.00
390 Other Purchased Professional and Technical Services				659.88
Total Purchased Professional and Technical Services				\$80,127.79
500 <u>Other Purchased Services</u>				
549 Other Advertising/Public Relations				266.45
580 Travel				6,155.21
Total Other Purchased Services				\$6,421.66
600 <u>Supplies</u>				
610 General Supplies				8,111.50
630 Food				6,942.44
640 Books and Periodicals				249.28
Total Supplies				\$15,303.22
800 <u>Other Objects</u>				
810 Dues and Fees				18,130.82
Total Other Objects				\$18,130.82
Total 2810 Planning, Research, Development and Evaluation Services				\$270,370.85

LEA : 114067002 Reading SD

Printed 1/24/2019 10:59:43 AM

REVISED SUBMISSION

General Fund (10)

2820 Information Services

Elementary Secondary Federal Total

100 <u>Personnel Services – Salaries</u>				
100 Personnel Services – Salaries				70,249.92
Total Personnel Services – Salaries				\$70,249.92
200 <u>Personnel Services – Employee Benefits</u>				
220 Social Security Contributions				5,330.52
230 PSERS Retirement Contributions				21,095.88
260 Workers’ Compensation				772.72
Total Personnel Services – Employee Benefits				\$27,199.12
300 <u>Purchased Professional and Technical Services</u>				
322 Professional Educational Services – Ius				391.04
Total Purchased Professional and Technical Services				\$391.04
500 <u>Other Purchased Services</u>				
530 Communications				13,336.08
549 Other Advertising/Public Relations				6,322.50
550 Printing and Binding				934.43
580 Travel				621.64
Total Other Purchased Services				\$21,214.65
600 <u>Supplies</u>				
610 General Supplies				8,223.27
630 Food				238.35
Total Supplies				\$8,461.62
Total 2820 Information Services				\$127,516.35

LEA : 114067002 Reading SD

Printed 1/24/2019 10:59:43 AM

REVISED SUBMISSION

General Fund (10)

2823 Public Information Services	<u>Elementary</u>	<u>Secondary</u>	<u>Federal</u>	<u>Total</u>
100 <u>Personnel Services – Salaries</u>				
100 Personnel Services – Salaries				70,249.92
Total Personnel Services – Salaries				\$70,249.92
200 <u>Personnel Services – Employee Benefits</u>				
220 Social Security Contributions				5,330.52
230 PSERS Retirement Contributions				21,095.88
260 Workers’ Compensation				772.72
Total Personnel Services – Employee Benefits				\$27,199.12
300 <u>Purchased Professional and Technical Services</u>				
322 Professional Educational Services – Ius				391.04
Total Purchased Professional and Technical Services				\$391.04
500 <u>Other Purchased Services</u>				
530 Communications				13,336.08
549 Other Advertising/Public Relations				6,322.50
550 Printing and Binding				934.43
580 Travel				621.64
Total Other Purchased Services				\$21,214.65
600 <u>Supplies</u>				
610 General Supplies				8,223.27
630 Food				238.35
Total Supplies				\$8,461.62
Total 2823 Public Information Services				\$127,516.35

LEA : 114067002 Reading SD

Printed 1/24/2019 10:59:43 AM

REVISED SUBMISSION

General Fund (10)				
2830 Staff Services				
	<u>Elementary</u>	<u>Secondary</u>	<u>Federal</u>	<u>Total</u>
100 <u>Personnel Services – Salaries</u>				
100 Personnel Services – Salaries				460,794.60
Total Personnel Services – Salaries				\$460,794.60
200 <u>Personnel Services – Employee Benefits</u>				
210 Group Insurance – Contracted Provider				138,750.00
220 Social Security Contributions				36,912.14
230 PSERS Retirement Contributions				149,089.14
260 Workers' Compensation				5,757.61
299 All Other Employee Benefits				(20,442.86)
Total Personnel Services – Employee Benefits				\$310,066.03
300 <u>Purchased Professional and Technical Services</u>				
310 Official / Administrative Services				15,200.44
324 Professional Educational Services – Employee Training and Development Services				7,904.00
330 Other Professional Services				170,423.57
Total Purchased Professional and Technical Services				\$193,528.01
500 <u>Other Purchased Services</u>				
520 Insurance – General				793,664.50
549 Other Advertising/Public Relations				9,114.95
550 Printing and Binding				70.00
580 Travel				2,055.43
Total Other Purchased Services				\$804,904.88
600 <u>Supplies</u>				
610 General Supplies				1,645.80
Total Supplies				\$1,645.80
800 <u>Other Objects</u>				
810 Dues and Fees				341.88
890 Miscellaneous Expenditures				45.00
Total Other Objects				\$386.88
Total 2830 Staff Services				\$1,771,326.20

LEA : 114067002 Reading SD

Printed 1/24/2019 10:59:43 AM

REVISED SUBMISSION

General Fund (10)

2831 Supervision of Staff Services	<u>Elementary</u>	<u>Secondary</u>	<u>Federal</u>	<u>Total</u>
100 <u>Personnel Services – Salaries</u>				
100 Personnel Services – Salaries				130,290.11
Total Personnel Services – Salaries				\$130,290.11
200 <u>Personnel Services – Employee Benefits</u>				
210 Group Insurance – Contracted Provider				17,450.00
220 Social Security Contributions				9,109.28
230 PSERS Retirement Contributions				38,956.96
260 Workers' Compensation				1,433.18
Total Personnel Services – Employee Benefits				\$66,949.42
Total 2831 Supervision of Staff Services				\$197,239.53

LEA : 114067002 Reading SD

Printed 1/24/2019 10:59:43 AM

REVISED SUBMISSION

General Fund (10)				
2832 Recruitment and Placement Services	Elementary	Secondary	Federal	Total
100 <u>Personnel Services – Salaries</u>				
100 Personnel Services – Salaries				330,504.49
Total Personnel Services – Salaries				\$330,504.49
200 <u>Personnel Services – Employee Benefits</u>				
210 Group Insurance – Contracted Provider				121,300.00
220 Social Security Contributions				27,802.86
230 PSERS Retirement Contributions				110,132.18
260 Workers' Compensation				4,324.43
299 All Other Employee Benefits				(20,442.86)
Total Personnel Services – Employee Benefits				\$243,116.61
300 <u>Purchased Professional and Technical Services</u>				
310 Official / Administrative Services				15,200.44
324 Professional Educational Services – Employee Training and Development Services				1,154.00
330 Other Professional Services				170,423.57
Total Purchased Professional and Technical Services				\$186,778.01
500 <u>Other Purchased Services</u>				
520 Insurance – General				793,664.50
549 Other Advertising/Public Relations				9,114.95
550 Printing and Binding				70.00
580 Travel				2,055.43
Total Other Purchased Services				\$804,904.88
600 <u>Supplies</u>				
610 General Supplies				1,645.80
Total Supplies				\$1,645.80
800 <u>Other Objects</u>				
810 Dues and Fees				341.88
890 Miscellaneous Expenditures				45.00
Total Other Objects				\$386.88
Total 2832 Recruitment and Placement Services				\$1,567,336.67

LEA : 114067002 Reading SD

Printed 1/24/2019 10:59:43 AM

REVISED SUBMISSION

General Fund (10)

2834 Staff Development Services – Non-Instructional, Certified Staff Only	<u>Elementary</u>	<u>Secondary</u>	<u>Federal</u>	<u>Total</u>
300 <u>Purchased Professional and Technical Services</u>				
324 Professional Educational Services – Employee Training and Development Services				6,750.00
Total Purchased Professional and Technical Services				\$6,750.00
Total 2834 Staff Development Services – Non-Instructional, Certified Staff Only				\$6,750.00

LEA : 114067002 Reading SD

Printed 1/24/2019 10:59:43 AM

REVISED SUBMISSION

General Fund (10)

2840 Data Processing Services	Elementary	Secondary	Federal	Total
100 <u>Personnel Services – Salaries</u>				
100 Personnel Services – Salaries				437,658.11
Total Personnel Services – Salaries				\$437,658.11
200 <u>Personnel Services – Employee Benefits</u>				
210 Group Insurance – Contracted Provider				139,200.00
220 Social Security Contributions				35,742.17
230 PSERS Retirement Contributions				140,979.54
260 Workers' Compensation				5,225.44
299 All Other Employee Benefits				(19,948.50)
Total Personnel Services – Employee Benefits				\$301,198.65
300 <u>Purchased Professional and Technical Services</u>				
340 Technical Services				333,057.05
Total Purchased Professional and Technical Services				\$333,057.05
400 <u>Purchased Property Services</u>				
430 Repairs and Maintenance Services				788.00
Total Purchased Property Services				\$788.00
500 <u>Other Purchased Services</u>				
530 Communications				193,383.81
549 Other Advertising/Public Relations				1,059.70
580 Travel				1,226.85
Total Other Purchased Services				\$195,670.36
600 <u>Supplies</u>				
610 General Supplies				1,628,436.80
Total Supplies				\$1,628,436.80
Total 2840 Data Processing Services				\$2,896,808.97

LEA : 114067002 Reading SD

Printed 1/24/2019 10:59:43 AM

REVISED SUBMISSION

General Fund (10)

2850 State and Federal Agency Liaison Services	<u>Elementary</u>	<u>Secondary</u>	<u>Federal</u>	<u>Total</u>
100 <u>Personnel Services – Salaries</u>				
100 Personnel Services – Salaries			161,729.43	161,729.43
Total Personnel Services – Salaries			\$161,729.43	\$161,729.43
200 <u>Personnel Services – Employee Benefits</u>				
210 Group Insurance – Contracted Provider			53,425.00	53,425.00
220 Social Security Contributions			12,159.15	12,159.15
230 PSERS Retirement Contributions			23,649.97	47,299.94
260 Workers' Compensation			1,778.82	1,778.82
Total Personnel Services – Employee Benefits			\$91,012.94	\$114,662.91
600 <u>Supplies</u>				
610 General Supplies			1,509.34	1,509.34
640 Books and Periodicals			348.50	348.50
Total Supplies			\$1,857.84	\$1,857.84
Total 2850 State and Federal Agency Liaison Services			\$254,600.21	\$278,250.18

LEA : 114067002 Reading SD

Printed 1/24/2019 10:59:43 AM

REVISED SUBMISSION

General Fund (10)

2900 Other Support Services	<u>Elementary</u>	<u>Secondary</u>	<u>Federal</u>	<u>Total</u>
100 <u>Personnel Services – Salaries</u>				
100 Personnel Services – Salaries				104,318.25
Total Personnel Services – Salaries				\$104,318.25
200 <u>Personnel Services – Employee Benefits</u>				
210 Group Insurance – Contracted Provider				37,500.00
220 Social Security Contributions				7,845.97
230 PSERS Retirement Contributions				29,744.38
260 Workers' Compensation				1,147.54
Total Personnel Services – Employee Benefits				\$76,237.89
500 <u>Other Purchased Services</u>				
591 Services Purchased Locally				50.00
595 IU Payments By Withholding				42,770.68
Total Other Purchased Services				\$42,820.68
Total 2900 Other Support Services				\$223,376.82

LEA : 114067002 Reading SD

Printed 1/24/2019 10:59:43 AM

REVIS
ED SUBMISSION

General Fund (10)				
2910 Support Services Not Listed Elsewhere In the 2000 Series	<u>Elementary</u>	<u>Secondary</u>	<u>Federal</u>	<u>Total</u>
100 <u>Personnel Services – Salaries</u>				
100 Personnel Services – Salaries				104,318.25
Total Personnel Services – Salaries				\$104,318.25
200 <u>Personnel Services – Employee Benefits</u>				
210 Group Insurance – Contracted Provider				37,500.00
220 Social Security Contributions				7,845.97
230 PSERS Retirement Contributions				29,744.38
260 Workers' Compensation				1,147.54
Total Personnel Services – Employee Benefits				\$76,237.89
500 <u>Other Purchased Services</u>				
591 Services Purchased Locally				50.00
595 IU Payments By Withholding				42,770.68
Total Other Purchased Services				\$42,820.68
Total 2910 Support Services Not Listed Elsewhere In the 2000 Series				\$223,376.82

LEA : 114067002 Reading SD

Printed 1/24/2019 10:59:45 AM

REVISED SUBMISSION

General Fund (10)	
3000 Operation of Non-Instructional Services	<u>Total</u>
100 <u>Personnel Services – Salaries</u>	
100 Personnel Services – Salaries	1,266,353.14
Total Personnel Services – Salaries	\$1,266,353.14
200 <u>Personnel Services – Employee Benefits</u>	
210 Group Insurance – Contracted Provider	291,850.00
220 Social Security Contributions	95,574.19
230 PSERS Retirement Contributions	361,998.32
260 Workers' Compensation	13,226.27
Total Personnel Services – Employee Benefits	\$762,648.78
300 <u>Purchased Professional and Technical Services</u>	
322 Professional Educational Services – Ius	7,057.21
330 Other Professional Services	129,458.01
340 Technical Services	43,958.67
390 Other Purchased Professional and Technical Services	15,048.00
Total Purchased Professional and Technical Services	\$195,521.89
400 <u>Purchased Property Services</u>	
410 Cleaning Services	2,782.53
430 Repairs and Maintenance Services	10,525.82
440 Rentals	1,900.00
Total Purchased Property Services	\$15,208.35
500 <u>Other Purchased Services</u>	
510 Student Transportation Services	251,684.37
520 Insurance – General	38,881.00
549 Other Advertising/Public Relations	112.00
550 Printing and Binding	1,867.00
580 Travel	7,614.85
591 Services Purchased Locally	135,012.50
Total Other Purchased Services	\$435,171.72
600 <u>Supplies</u>	
610 General Supplies	128,246.08
630 Food	70,833.98
640 Books and Periodicals	930.00
Total Supplies	\$200,010.06
700 <u>Property</u>	
790 Other Property	26,626.86
Total Property	\$26,626.86
800 <u>Other Objects</u>	
810 Dues and Fees	21,784.92
890 Miscellaneous Expenditures	9,007.00
Total Other Objects	\$30,791.92
Total 3000 Operation of Non-Instructional Services	\$2,932,332.72

LEA : 114067002 Reading SD

Printed 1/24/2019 10:59:45 AM

REVISED SUBMISSION

General Fund (10)				
3200 Student Activities	<u>Elementary</u>	<u>Secondary</u>	<u>Federal</u>	<u>Total</u>
100 <u>Personnel Services – Salaries</u>				
100 Personnel Services – Salaries				871,171.73
Total Personnel Services – Salaries				\$871,171.73
200 <u>Personnel Services – Employee Benefits</u>				
210 Group Insurance – Contracted Provider				53,650.00
220 Social Security Contributions				66,408.64
230 PSERS Retirement Contributions				243,090.00
260 Workers' Compensation				8,883.05
Total Personnel Services – Employee Benefits				\$372,031.69
300 <u>Purchased Professional and Technical Services</u>				
330 Other Professional Services				129,458.01
340 Technical Services				43,958.67
390 Other Purchased Professional and Technical Services				15,048.00
Total Purchased Professional and Technical Services				\$188,464.68
400 <u>Purchased Property Services</u>				
410 Cleaning Services				2,782.53
430 Repairs and Maintenance Services				10,525.82
440 Rentals				1,900.00
Total Purchased Property Services				\$15,208.35
500 <u>Other Purchased Services</u>				
510 Student Transportation Services				251,684.37
520 Insurance – General				38,881.00
549 Other Advertising/Public Relations				112.00
550 Printing and Binding				1,867.00
580 Travel				7,614.85
Total Other Purchased Services				\$300,159.22
600 <u>Supplies</u>				
610 General Supplies				126,752.00
630 Food				67,921.00
640 Books and Periodicals				516.00
Total Supplies				\$195,189.00
700 <u>Property</u>				
790 Other Property				26,626.86
Total Property				\$26,626.86
800 <u>Other Objects</u>				
810 Dues and Fees				21,784.92
890 Miscellaneous Expenditures				9,007.00
Total Other Objects				\$30,791.92
Total 3200 Student Activities				\$1,999,643.45

LEA : 114067002 Reading SD

Printed 1/24/2019 10:59:45 AM

REVISED SUBMISSION

General Fund (10)				
3300 Community Services				
	<u>Elementary</u>	<u>Secondary</u>	<u>Federal</u>	<u>Total</u>
100 <u>Personnel Services – Salaries</u>				
100 Personnel Services – Salaries			395,181.41	395,181.41
Total Personnel Services – Salaries			\$395,181.41	\$395,181.41
200 <u>Personnel Services – Employee Benefits</u>				
210 Group Insurance – Contracted Provider			238,200.00	238,200.00
220 Social Security Contributions			29,165.55	29,165.55
230 PSERS Retirement Contributions			59,571.32	118,908.32
260 Workers' Compensation			4,343.22	4,343.22
Total Personnel Services – Employee Benefits			\$331,280.09	\$390,617.09
300 <u>Purchased Professional and Technical Services</u>				
322 Professional Educational Services – lus			7,057.21	7,057.21
Total Purchased Professional and Technical Services			\$7,057.21	\$7,057.21
500 <u>Other Purchased Services</u>				
591 Services Purchased Locally				135,012.50
Total Other Purchased Services				\$135,012.50
600 <u>Supplies</u>				
610 General Supplies			1,494.08	1,494.08
630 Food			2,912.98	2,912.98
640 Books and Periodicals			414.00	414.00
Total Supplies			\$4,821.06	\$4,821.06
Total 3300 Community Services			\$738,339.77	\$932,689.27

General Fund (10)

5000 Other Expenditures and Financing Uses

Total

800	<u>Other Objects</u>	
830	Interest	12,479,614.00
880	Refunds of Prior Years' Receipts	6,598.41
Total Other Objects		\$12,486,212.41
900	<u>Other Uses of Funds</u>	
910	Redemption of Principal	4,435,000.00
Total Other Uses of Funds		\$4,435,000.00
Total 5000 Other Expenditures and Financing Uses		\$16,921,212.41

LEA : 114067002 Reading SD

Printed 1/24/2019 10:59:51 AM

REVISED SUBMISSION

General Fund (10)

5100 Debt Service / Other Expenditures and Financing Uses

Elementary

Secondary

Federal

Total

800 Other Objects

830 Interest 12,479,614.00

880 Refunds of Prior Years' Receipts 6,598.41

Total Other Objects \$12,486,212.41

900 Other Uses of Funds

910 Redemption of Principal 4,435,000.00

Total Other Uses of Funds \$4,435,000.00

Total 5100 Debt Service / Other Expenditures and Financing Uses \$16,921,212.41

LEA : 114067002 Reading SD

Printed 1/24/2019 10:59:51 AM

REVISED SUBMISSION

General Fund (10)				
5110 Debt Service	<u>Elementary</u>	<u>Secondary</u>	<u>Federal</u>	<u>Total</u>
800 <u>Other Objects</u>				
830 Interest				12,479,614.00
Total Other Objects				\$12,479,614.00
900 <u>Other Uses of Funds</u>				
910 Redemption of Principal				4,435,000.00
Total Other Uses of Funds				\$4,435,000.00
Total 5110 Debt Service				\$16,914,614.00

LEA : 114067002 Reading SD

Printed 1/24/2019 10:59:51 AM

REVISED SUBMISSION

General Fund (10)

5130 Refund of Prior Year Revenues / Receipts	<u>Elementary</u>	<u>Secondary</u>	<u>Federal</u>	<u>Total</u>
800 <u>Other Objects</u>				
880 Refunds of Prior Years' Receipts				6,598.41
Total Other Objects				\$6,598.41
Total 5130 Refund of Prior Year Revenues / Receipts				\$6,598.41

Other Comptroller-Approved Special Revenue Funds (28)

3000 Operation of Non-Instructional Services		<u>Total</u>
300	<u>Purchased Professional and Technical Services</u>	
330	Other Professional Services	53,714.34
Total Purchased Professional and Technical Services		\$53,714.34
400	<u>Purchased Property Services</u>	
440	Rentals	1,231.48
Total Purchased Property Services		\$1,231.48
500	<u>Other Purchased Services</u>	
580	Travel	2,504.00
Total Other Purchased Services		\$2,504.00
600	<u>Supplies</u>	
610	General Supplies	70,686.05
630	Food	1,156.57
Total Supplies		\$71,842.62
800	<u>Other Objects</u>	
810	Dues and Fees	11,014.09
890	Miscellaneous Expenditures	16,691.11
Total Other Objects		\$27,705.20
Total 3000 Operation of Non-Instructional Services		\$156,997.64

LEA : 114067002 Reading SD

Printed 1/24/2019 10:59:49 AM

REVISED SUBMISSION

Other Comptroller-Approved Special Revenue Funds (28)

3300 Community Services	Elementary	Secondary	Federal	Total
300 <u>Purchased Professional and Technical Services</u>				
330 Other Professional Services				53,714.34
Total Purchased Professional and Technical Services				\$53,714.34
400 <u>Purchased Property Services</u>				
440 Rentals				1,231.48
Total Purchased Property Services				\$1,231.48
500 <u>Other Purchased Services</u>				
580 Travel				2,504.00
Total Other Purchased Services				\$2,504.00
600 <u>Supplies</u>				
610 General Supplies				70,686.05
630 Food				1,156.57
Total Supplies				\$71,842.62
800 <u>Other Objects</u>				
810 Dues and Fees				11,014.09
890 Miscellaneous Expenditures				16,691.11
Total Other Objects				\$27,705.20
Total 3300 Community Services				\$156,997.64

Other Capital Projects Fund (39)

4000 Facilities Acquisition, Construction and Improvement Services

Total

300 Purchased Professional and Technical Services

330 Other Professional Services	326,397.00
---------------------------------	------------

Total Purchased Professional and Technical Services	\$326,397.00
--	---------------------

400 Purchased Property Services

450 Construction Services	1,989,339.00
---------------------------	--------------

Total Purchased Property Services	\$1,989,339.00
--	-----------------------

Total 4000 Facilities Acquisition, Construction and Improvement Services	\$2,315,736.00
---	-----------------------

LEA : 114067002 Reading SD

Printed 1/24/2019 10:59:50 AM

REVISED SUBMISSION

Other Capital Projects Fund (39)

4600 Existing Building Improvement Services	<u>Elementary</u>	<u>Secondary</u>	<u>Federal</u>	<u>Total</u>
300 <u>Purchased Professional and Technical Services</u>				
330 Other Professional Services				326,397.00
Total Purchased Professional and Technical Services				\$326,397.00
400 <u>Purchased Property Services</u>				
450 Construction Services				1,989,339.00
Total Purchased Property Services				\$1,989,339.00
Total 4600 Existing Building Improvement Services				\$2,315,736.00

LEA : 114067002 Reading SD

Printed 1/24/2019 10:59:53 AM

REVISED SUBMISSION

	<u>General Fund(10)</u>	<u>Public Purpose Trust(27)</u>	<u>Other Compt Approved</u> <u>(28)</u>	<u>Athletic / Activity(29)</u>	<u>Capital Reserve (690.</u> <u>1850)(31)</u>
1000 <u>Instruction</u>					
1100 Regular Programs - Elementary / Secondary	96,538,097.35				
1200 Special Programs - Elementary / Secondary	39,506,556.41				
1300 Vocational Education	5,279,045.10				
1400 Other Instructional Programs - Elementary / Secondary	3,537,470.88				
1500 Nonpublic School Programs	385,735.88				
1600 Adult Education Programs	185,765.64				
1800 Pre-Kindergarten	1,952,564.63				
Total Instruction	\$147,385,235.89				
2000 <u>Support Services</u>					
2100 Support Services - Students	7,718,064.16				
2200 Support Services - Instructional Staff	4,515,916.97				
2300 Support Services - Administration	18,813,519.12				
2400 Support Services - Pupil Health	3,425,419.97				
2500 Support Services - Business	1,353,280.40				
2600 Operation and Maintenance of Plant Services	20,449,999.73				
2700 Student Transportation Services	5,103,991.45				
2800 Support Services - Central	5,344,272.55				
2900 Other Support Services	223,376.82				
Total Support Services	\$66,947,841.17				
3000 <u>Operation of Non-Instructional Services</u>					
3200 Student Activities	1,999,643.45				
3300 Community Services	932,689.27		156,997.64		
Total Operation of Non-Instructional Services	\$2,932,332.72		\$156,997.64		
4000 <u>Facilities Acquisition, Construction and Improvement Services</u>					
4600 Existing Building Improvement Services					
Total Facilities Acquisition, Construction and Improvement					
5000 <u>Other Expenditures and Financing Uses</u>					
5100 Debt Service / Other Expenditures and Financing Uses	16,921,212.41				
Total Other Expenditures and Financing Uses	\$16,921,212.41				
TOTAL ACTUAL EXPENDITURES & OTHER FINANCING USES	\$234,186,622.19		\$156,997.64		

LEA : 114067002 Reading SD

Printed 1/24/2019 10:59:53 AM

REVISED SUBMISSION

	Capital Reserve (1431)(32)	Other Capital Projects Fund(39)	Debt Service(40)	Permanent(90)	Total
1000 <u>Instruction</u>					
1100 Regular Programs - Elementary / Secondary					96,538,097.35
1200 Special Programs - Elementary / Secondary					39,506,556.41
1300 Vocational Education					5,279,045.10
1400 Other Instructional Programs - Elementary / Secondary					3,537,470.88
1500 Nonpublic School Programs					385,735.88
1600 Adult Education Programs					185,765.64
1800 Pre-Kindergarten					1,952,564.63
Total Instruction					\$147,385,235.89
2000 <u>Support Services</u>					
2100 Support Services - Students					7,718,064.16
2200 Support Services - Instructional Staff					4,515,916.97
2300 Support Services - Administration					18,813,519.12
2400 Support Services - Pupil Health					3,425,419.97
2500 Support Services - Business					1,353,280.40
2600 Operation and Maintenance of Plant Services					20,449,999.73
2700 Student Transportation Services					5,103,991.45
2800 Support Services - Central					5,344,272.55
2900 Other Support Services					223,376.82
Total Support Services					\$66,947,841.17
3000 <u>Operation of Non-Instructional Services</u>					
3200 Student Activities					1,999,643.45
3300 Community Services					1,089,686.91
Total Operation of Non-Instructional Services					\$3,089,330.36
4000 <u>Facilities Acquisition, Construction and Improvement Services</u>					
4600 Existing Building Improvement Services		2,315,736.00			2,315,736.00
Total Facilities Acquisition, Construction and Improvement		\$2,315,736.00			\$2,315,736.00
5000 <u>Other Expenditures and Financing Uses</u>					
5100 Debt Service / Other Expenditures and Financing Uses					16,921,212.41
Total Other Expenditures and Financing Uses					\$16,921,212.41
TOTAL ACTUAL EXPENDITURES & OTHER FINANCING USES		\$2,315,736.00			\$236,659,355.83

LEA : 114067002 Reading SD

Printed 1/24/2019 10:59:58 AM

REVISED SUBMISSION

PSERS Salary Data (Salary Data should relate to the General Fund only)

Amount	Description	Amount
	Total Salary Base for salaries subject to PSERS withholding	81,397,948.32
	Total Federally Funded salaries subject to PSERS withholding	7,937,909.12

Title I Expenditure Data

Amount	Description	Amount
	Expenditures Funded with Current Title I Funds	10,499,404.57
	Expenditures Funded with Carry over Title I Funds	1,386,145.66
	Total Title I Expenditure Data	\$11,885,550.23

Title I ARRA Amount

Amount	Description	Amount
	Portion of Total Title I Expenditures funded with ARRA Title I	

Benefits for Staff Relative to Collective Bargaining Agreements

	OBJECT	COVERED	NOT COVERED	TOTAL
10 General Fund				
	211 Medical Insurance			
	212 Dental Insurance			
	215 Eye Care Insurance			
	216 Prescription Insurance			
	271 Self-Insurance Medical Benefits	25,454,876.74		25,454,876.74
	272 Self-Insurance Dental Benefits			
	275 Self-Insurance Eye Care Benefits			
	276 Self-Insurance Prescription Benefits			
	FUND TOTAL	\$25,454,876.74		\$25,454,876.74
50 Enterprise Fund				
	211 Medical Insurance			
	212 Dental Insurance			
	215 Eye Care Insurance			
	216 Prescription Insurance			
	271 Self-Insurance Medical Benefits	1,366,750.00		1,366,750.00
	272 Self-Insurance Dental Benefits			
	275 Self-Insurance Eye Care Benefits			
	276 Self-Insurance Prescription Benefits			
	FUND TOTAL	\$1,366,750.00		\$1,366,750.00
60 Internal Service Fund	No Self Insurance data to report			
	211 Medical Insurance			
	212 Dental Insurance			
	215 Eye Care Insurance			
	216 Prescription Insurance			
	271 Self-Insurance Medical Benefits			
	272 Self-Insurance Dental Benefits			
	275 Self-Insurance Eye Care Benefits			
	276 Self-Insurance Prescription Benefits			
	FUND TOTAL			
Total of All Funds		\$26,821,626.74		\$26,821,626.74

LEA : 114067002 Reading SD

Printed 1/24/2019 11:00:05 AM

REVIS
ED SUBMISSION

Function	Special Education (Prior Year)	Nonspecial Education (Prior Year)	Total (Prior Year)	Special Education (Current Year)	Nonspecial Education (Current Year)	Total (Current Year)
2120 Guidance Services	208,847.41	4,045,585.72	4,254,433.13	230,043.35	4,169,319.97	4,399,363.32
2140 Psychological Services	193,917.95	1,220,715.07	1,414,633.02	101,778.86	1,147,997.99	1,249,776.85
2150 Speech Pathology and Audiology Services						
2160 Social Work Services		244,320.59	244,320.59		262,150.06	262,150.06
2260 Instruction and Curriculum Development Services	372,625.52	900,298.55	1,272,924.07	251,063.97	934,809.95	1,185,873.92
2350 Legal and Accounting Services	173,947.79	262,865.89	436,813.68	256,425.06	574,780.17	831,205.23
2420 Medical Services	263,872.64	175,915.09	439,787.73		578,131.30	578,131.30
2440 Nursing Services	1,376,435.95	917,623.97	2,294,059.92	165,168.43	2,228,503.09	2,393,671.52
2700 Student Transportation Services	2,086,659.42	3,129,989.12	5,216,648.54	3,091,084.63	2,012,906.82	5,103,991.45
Total	\$4,676,306.68	\$10,897,314.00	\$15,573,620.68	\$4,095,564.30	\$11,908,599.35	\$16,004,163.65

LEA : 114067002 Reading SD

Printed 1/24/2019 11:00:06 AM

REVISED SUBMISSION

(PRINCIPAL AMOUNTS ONLY)

GOVERNMENTAL FUNDS/ ACTIVITIES

	Short-Term Borrowing	General Obligation Bonds/Notes	Authority Building Obligations	Other Long-Term Debt	Other Post- Employment Benefits (OPEB)	Compensated Absences	Net Pension Liability	Total
1. Debt at Beginning of Fiscal Year		300,242,014.00			120,575,525.00	1,985,294.93	287,383,000.00	710,185,833.93
2. Additional Debt Incurred During Year					7,588,293.00	563,635.74	26,300,000.00	34,451,928.74
3. Retirements and Repayments		4,435,000.00						4,435,000.00
4. Debt at End of Fiscal Year		295,807,014.00			128,163,818.00	2,548,930.67	313,683,000.00	740,202,762.67
5. Accreted Interest at End Of Fiscal Year		27,840,731.00						27,840,731.00
6. Total Debt and Accreted Interest		323,647,745.00			128,163,818.00	2,548,930.67	313,683,000.00	768,043,493.67
7. Current Portion P&I - Due within 1 year		25,586,973.00						25,586,973.00
8. Interest Paid during current fiscal year		12,479,495.00						12,479,495.00

(PRINCIPAL AMOUNTS ONLY)

PROPRIETARY FUNDS

- 1. Debt at Beginning of Fiscal Year
- 2. Additional Debt Incurred During Year
- 3. Retirements and Repayments
- 4. Debt at End of Fiscal Year
- 5. Accreted Interest at End Of Fiscal Year
- 6. Total Debt and Accreted Interest
- 7. Current Portion P&I - Due within 1 year
- 8. Interest Paid during current fiscal year

Total Principal and Interest Payments Made by Your School - All Funds

Function	Fund		Principal (910)	Principal (920)	Interest (830)	Total (Principal +Interest)	Misc Other Uses (990)
5110	10	General Fund	4,435,000.00		12,479,614.00	16,914,614.00	
5110	20	Special Revenue Funds					
5110	30	Capital Projects Funds					
5110	40	Debt Service Fund					
5110	90	Permanent Fund					
5120	10	General Fund					
5120	20	Special Revenue Funds					
5120	30	Capital Projects Funds					
5120	40	Debt Service Fund					
Total Debt Payments - Governmental Funds			\$4,435,000.00		\$12,479,614.00	\$16,914,614.00	

Function	Fund		Principal (910)	Principal (920)	Interest (830)	Total (Principal +Interest)
5110	50	Enterprise Fund				
5110	60	Internal Service Fund				
5120	50	Enterprise Fund				
5120	60	Internal Service Fund				
Total Debt Payments - Proprietary Funds						

LEA : 114067002 Reading SD

Printed 1/24/2019 11:00:06 AM

REVISED SUBMISSION

Debt Details
Governmental Funds/ Activities

Debt Category	Debt Issue Date (MM/YYYY)	Principal Amounts Only				Current Portion Due Within One Year (Principal and Interest)	Interest Paid During Fiscal Year
		Debt at Beginning of Fiscal Year	Additions	Reductions / Repayments	Debt at End of Fiscal Year		
General Obligation Bonds/Notes – CIB	10/2015	84,540,000.00		5,000.00	84,535,000.00	5,699,863.00	3,904,963.00
General Obligation Bonds/Notes – CIB	10/2015	2,730,000.00			2,730,000.00	112,613.00	112,613.00
General Obligation Bonds/Notes – CIB	10/2015	8,725,000.00			8,725,000.00	2,016,250.00	436,250.00
General Obligation Bonds/Notes – CIB	05/2014	620,000.00			620,000.00	18,600.00	18,600.00
General Obligation Bonds/Notes – CIB	05/2014	9,140,000.00		120,000.00	9,020,000.00	404,888.00	287,288.00
General Obligation Bonds/Notes – CIB	07/2014	9,830,000.00		70,000.00	9,760,000.00	423,566.00	354,441.00
General Obligation Bonds/Notes – CIB	05/2012	9,250,000.00		125,000.00	9,125,000.00	997,844.00	259,875.00
General Obligation Bonds/Notes – CIB	07/2011	41,660,000.00		1,850,000.00	39,810,000.00	7,783,200.00	1,940,700.00
General Obligation Bonds/Notes – CIB	07/2011	10,325,000.00		1,495,000.00	8,830,000.00	2,134,363.00	644,719.00
General Obligation Bonds/Notes – CIB	08/2008	94,825,000.00			94,825,000.00	5,803,571.00	4,483,571.00
General Obligation Bonds/Notes – CIB	07/2003	955,000.00		770,000.00	185,000.00	192,215.00	36,475.00
General Obligation Bonds/Notes – CAB	07/2003	27,642,014.00			27,642,014.00		
Compensated Absences		1,985,294.93	563,635.74		2,548,930.67		
Other Post-Employment Benefits (OPEB)		120,575,525.00	7,588,293.00		128,163,818.00		
Net Pension Liability		287,383,000.00	26,300,000.00		313,683,000.00		
Totals for Debt Entered:		\$710,185,833.93	\$34,451,928.74	\$4,435,000.00	\$740,202,762.67	\$25,586,973.00	\$12,479,495.00

LEA : 114067002 Reading SD

Printed 1/24/2019 11:00:06 AM

REVISED SUBMISSION

Accreted Interest Detail
Governmental Funds/ Activities

Debt Category	Debt Issue Date (MM/YYYY)	Beginning Accreted Interest	Additions	Reductions	Ending Accreted Interest	Ending bond Principal	Ending Principal Plus Accreted Interest
General Obligation Bonds/Notes – CAB	07/2003	25,139,762.00	2,700,969.00		27,840,731.00	27,642,014.00	55,482,745.00
Totals for Debt Entered:		\$25,139,762.00	\$2,700,969.00		\$27,840,731.00	\$27,642,014.00	\$55,482,745.00

LEA : 114067002 Reading SD

Printed 1/24/2019 11:00:07 AM

REVISED SUBMISSION

General Fund (10)

Section 1: Tuition/Purchased Services as Reported within Expenditure Detail	Amount
Tuition Reported in General Fund Expenditures 1000-560	24,817,649.09
Purchased Services in General Fund Expenditures 1000-594 and 1000-597	
Section 1 Total	\$24,817,649.09

Section 2: Tuition Paid to Institution Types During Fiscal Year	Tuition Paid For Nonspecial Education	Tuition Paid For Special Education	Total
1 1306 Institutions			
2 Institutionalized Children's Programs	440,174.96	1,300,834.60	1,741,009.56
3 Juveniles Incarcerated in Adult Facilities			
4 Residential Treatment Facilities			
5 Other Local Education Agencies			
6 Brick and Mortar Charter Schools	2,428,577.50	1,005,920.61	3,434,498.11
7 Cyber Charter Schools	4,455,245.76	1,427,030.29	5,882,276.05
8 Career and Technology Centers	5,279,045.10		5,279,045.10
9 Approved Private Schools	114,481.42	7,153,443.17	7,267,924.59
10 PA Chartered Schools for the Deaf and Blind			
11 Private Residential Rehabilitative Institutions		1,212,895.68	1,212,895.68
12 Juvenile Detention Centers			
13 Special Program Jointures			
14 Other Tuition Not Included Elsewhere In This Section			
Section 2 Total	\$12,717,524.74	\$12,100,124.35	\$24,817,649.09

LEA : 114067002 Reading SD

Printed 1/24/2019 11:00:09 AM

REVISED SUBMISSION

Food Service / Cafeteria Operations Fund (51)

3000 Operation of Non-Instructional Services		Total
100 Personnel Services – Salaries		
100 Personnel Services – Salaries		3,932,758.00
Total Personnel Services – Salaries		\$3,932,758.00
200 Personnel Services – Employee Benefits		
210 Group Insurance – Contracted Provider		1,366,750.00
220 Social Security Contributions		205,795.06
230 PSERS Retirement Contributions		775,784.22
250 Unemployment Compensation		27,303.80
260 Workers' Compensation		29,954.31
280 Other Post-Employment Benefits (OPEB)		245,885.00
291 Other Retirement Plans		88,000.00
299 All Other Employee Benefits		282,671.00
Total Personnel Services – Employee Benefits		\$3,022,143.39
400 Purchased Property Services		
420 Utility Services		261,888.00
430 Repairs and Maintenance Services		187,948.00
Total Purchased Property Services		\$449,836.00
500 Other Purchased Services		
520 Insurance – General		83,251.29
530 Communications		145.76
540 Advertising		2,699.00
550 Printing and Binding		479.00
570 Food Service Management		133,836.00
580 Travel		3,929.95
Total Other Purchased Services		\$224,341.00
600 Supplies		
610 General Supplies		409,469.00
620 Energy		89,424.00
630 Food		6,423,020.00
Total Supplies		\$6,921,913.00
700 Property		
740 Depreciation		135,631.00
Total Property		\$135,631.00
800 Other Objects		
810 Dues and Fees		629.00
890 Miscellaneous Expenditures		449.00
Total Other Objects		\$1,078.00
Total 3000 Operation of Non-Instructional Services		\$14,687,700.39

LEA : 114067002 Reading SD

Printed 1/24/2019 11:00:09 AM

REVISED SUBMISSION

Food Service / Cafeteria Operations Fund (51)

3100 Food Services	Elementary	Secondary	Federal	Total
100 <u>Personnel Services – Salaries</u>				
100 Personnel Services – Salaries				3,932,758.00
Total Personnel Services – Salaries				\$3,932,758.00
200 <u>Personnel Services – Employee Benefits</u>				
210 Group Insurance – Contracted Provider				1,366,750.00
220 Social Security Contributions				205,795.06
230 PSERS Retirement Contributions				775,784.22
250 Unemployment Compensation				27,303.80
260 Workers' Compensation				29,954.31
280 Other Post-Employment Benefits (OPEB)				245,885.00
291 Other Retirement Plans				88,000.00
299 All Other Employee Benefits				282,671.00
Total Personnel Services – Employee Benefits				\$3,022,143.39
400 <u>Purchased Property Services</u>				
420 Utility Services				261,888.00
430 Repairs and Maintenance Services				187,948.00
Total Purchased Property Services				\$449,836.00
500 <u>Other Purchased Services</u>				
520 Insurance – General				83,251.29
530 Communications				145.76
540 Advertising				2,699.00
550 Printing and Binding				479.00
570 Food Service Management				133,836.00
580 Travel				3,929.95
Total Other Purchased Services				\$224,341.00
600 <u>Supplies</u>				
610 General Supplies				409,469.00
620 Energy				89,424.00
630 Food				6,423,020.00
Total Supplies				\$6,921,913.00
700 <u>Property</u>				
740 Depreciation				135,631.00
Total Property				\$135,631.00
800 <u>Other Objects</u>				
810 Dues and Fees				629.00
890 Miscellaneous Expenditures				449.00
Total Other Objects				\$1,078.00
Total 3100 Food Services				\$14,687,700.39

	<u>Food Service(51)</u>	<u>Child Care Operations(52)</u>	<u>Other Enterprise(58)</u>	<u>Internal Service(60)</u>	<u>Total</u>
3000 <u>Operation of Non-Instructional Services</u>					
3100 Food Services	14,687,700.39				14,687,700.39
Total Operation of Non-Instructional Services	\$14,687,700.39				\$14,687,700.39
TOTAL ACTUAL EXPENDITURES & OTHER FINANCING USES	\$14,687,700.39				\$14,687,700.39